

***COMPLETE DIET  
SYSTEM***

# AMALIY MASHG'ULOTNING O'QITISH TEXNOLOGIYASI

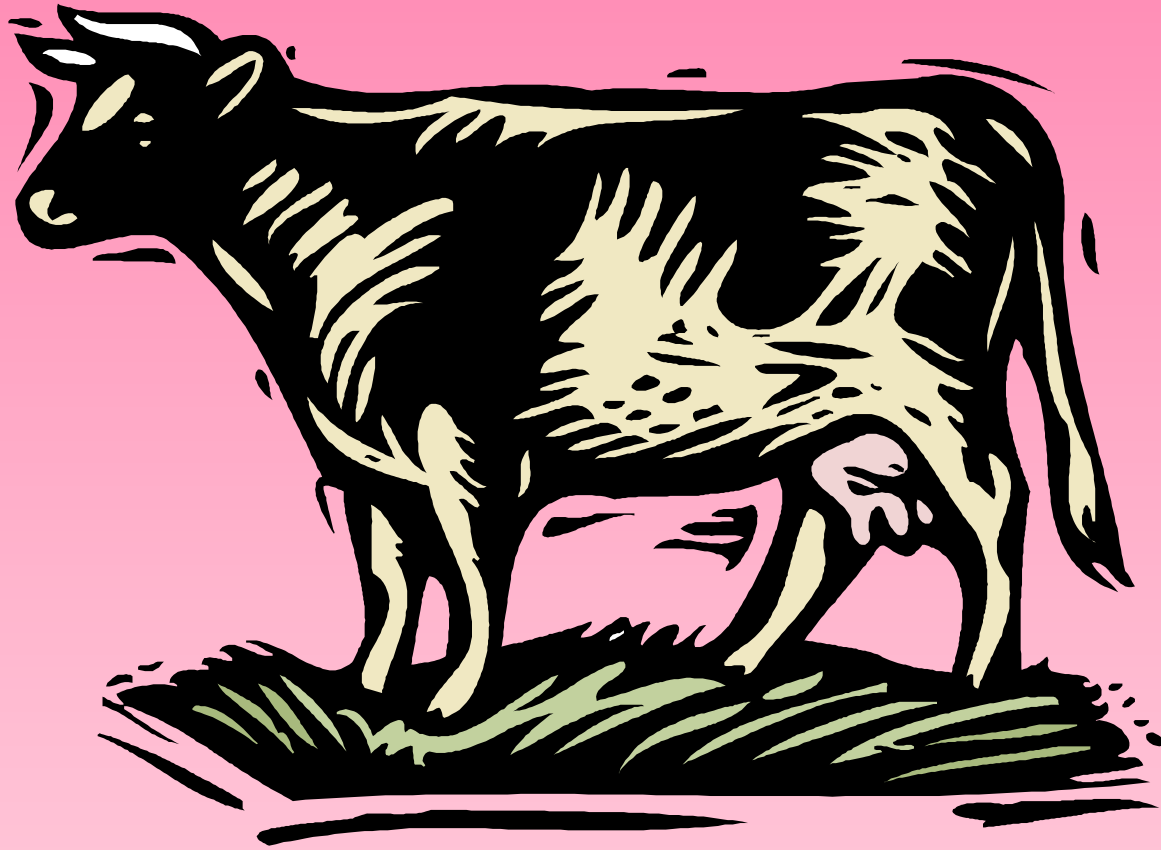
<b>VAQTI -2 SOAT</b>	<b>TALABALAR SONI: 10-15</b>
<b>O'QUV MASHG'ULOTINING SHAKLI</b>	<b>KIRISH, MULOQOT</b>
<b>AMALIY MASHG'ULOT REJASI</b>	<b>TAYANCH SO'ZLAR LEKSIK MASHQLAR MATN</b>
<b>O'QUV MASHG'ULOTINING MAQSADI: INGLIZ TILIDA SUHBAT QURISH, LEKSIK VA GRAMMATIK MASHQLARDA MAVZUGA DOIR SO'ZLARNI QO'LLASH.</b>	
<b>PEDAGOGIK VAZIFALAR:</b> <ul style="list-style-type: none"><li>- MAVZU MUHITINI YARATISH;</li><li>- TAYANCH SO'ZLARNI IZOHLASH;</li><li>- TAYANCH SO'ZLAR ISHTIROKIDA MASHQ BAJARISH;</li><li>- ANIQ VA MAJHUL NISBAT SHAKLINI TUSHUNTIRISH;</li><li>- MAVZUNI MUSTAHKAMLASH.</li></ul>	<b>O'QUV FAOLIYATINING NATIJALARI:</b> <b>TALABA:</b> <ul style="list-style-type: none"><li>- TAYANCH SO'ZLARNI ONA TILIGA TARJIMA QILADI;</li><li>- MASHQLAR BAJARADI;</li><li>- " COMPLETE DIET SYSTEM " MATNINI O'QIB, TARJIMA QILADI;</li><li>- BIR NECHA SO'ZLARDAN MAVZUGA DOIR SO'ZLARNI YASAYDI;</li><li>- MAVZUNI MUSTAHKAMLOVCHI MASHQLAR BAJARADI.</li></ul>
<b>O'QITISH USLUBI VA TEXNIKASI</b>	<b>BLITS-SO'ROV, BAYON QILISH, BIRGALIKDA O'QIYMIZ</b>
<b>O'QITISH VOSITALARI</b>	<b>O'QUV QO'LLANMA, PROYEKTOR, TARQATMA MATERIALLAR, DOSKA.</b>
<b>O'QITISH SHAKLI</b>	<b>JAMO'A, GURUH VA JUFTLIKDA ISHLASH.</b>
<b>O'QITISH SHART-SHAROITI</b>	<b>KOMPUTER TEXNOLOGIYALARI BILAN TAMINLANGAN, GURUHDA DARS O'TISHGA MOSLASHTIRILGAN AUDITORIYA.</b>

## AMALIY MASHG'ULOTNING TEXNOLOGIK XARITASI

<b>BOSQICHLAR, VAQTI</b>	<b>FAOLIYAT MAZMUNI</b>	
	<b>O'QITUVCHI</b>	<b>TALABA</b>
<b>1-BOSQICH. KIRISH (10 MIN.)</b>	<b>1.1. MAVZU, UNING MAQSADI, O'QUV MASHG'ULOTIDAN KUTILAYOTGAN NATIJALAR MALUM QILINADI.</b>	<b>1.1 ESHITADI VA MAVZUNI YOZIB OLADI.</b>
<b>2-BOSQICH. ASOSIY (60 MIN.)</b>	<b>2.1. AQLIY HUJUM USULIDAN FOYDALANGAN HOLDA AUDITORIYANING TAYYORGARLIK DARAJASINI ANIQLAYDI:</b>  <b>2.2. O'QITUVCHI MAVZUGA DOIR YANGI SO'Z VA IBORALARNI YOZADI.</b> <b>2.3. "COMPLETE DIET SYSTEM" MATNINI HAQIDA QISQACHA GAPIRADI.</b> <b>2.4. MATN YUZASIDAN SAVOLLAR VA MASHQLAR BERADI.</b>	<b>2.1. SAVOLLARGA JAVOB BERADI.</b> <b>2.2. LUG'ATDAN FOYDALANGAN HOLDA ONA TILIGA TARJIMA QILADI.</b> <b>2.3. MATNNI O'QIB TARJIMA QILADI.</b> <b>2.4. SAVOLLARGA JAVOB BERADI VA MASHQLARNI BAJARADI.</b>
<b>3-BOSQICH. YAKUNIY (10 MIN.)</b>	<b>3.1. MASHG'ULOTNI YAKUNLAYDI.</b> <b>3.2. TALABALARNI BAHOLAYDI VA FAOL ISHTIROKCHILARNI RAG'BATLANTIRADI.</b> <b>3.3. UYGA VAZIFA BERADI.</b>	<b>3.1. ESHITADI, MUHOKAMADA ISHTIROK ETADI.</b> <b>3.2. ESHITADI.</b> <b>3.3. YOZIB OLADI.</b>

# VOCABULARY

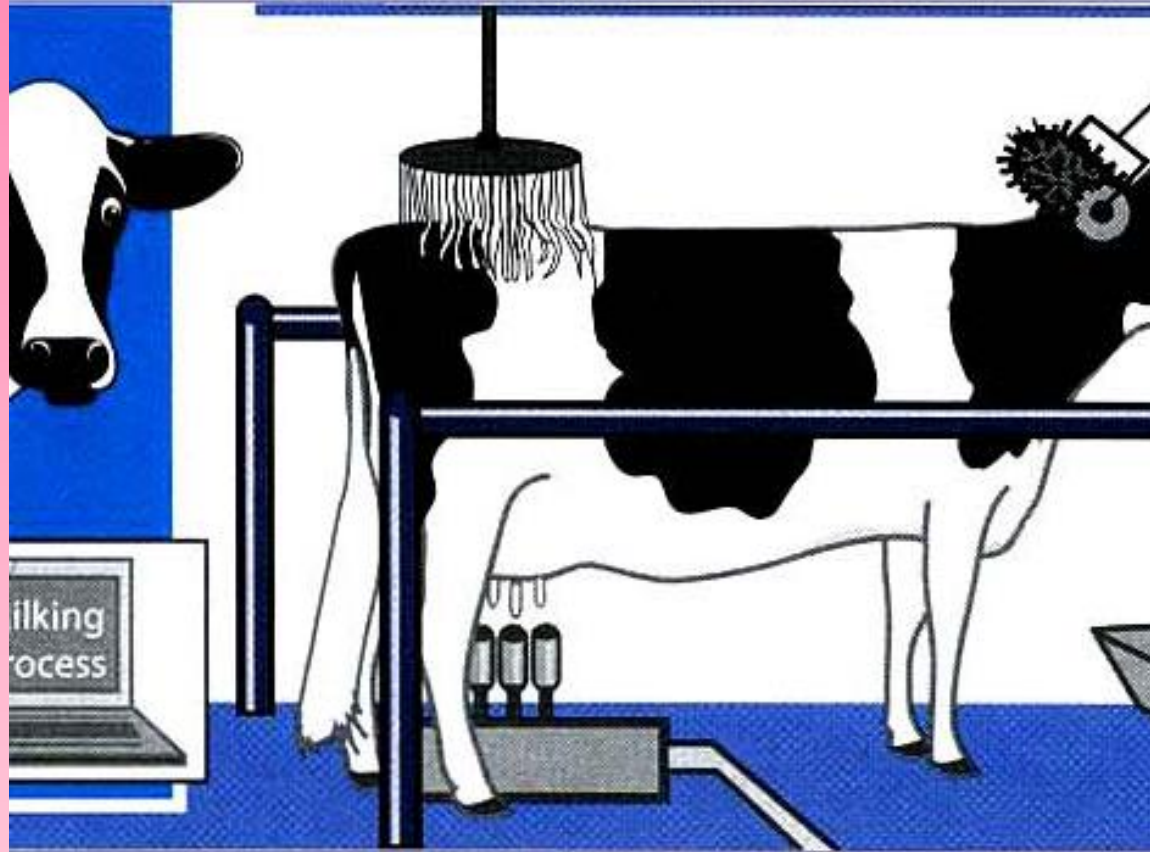
- ✓ *ITEM—NARSA*
- ✓ *REPRESENT—TASHKIL ETUVCHI*
- ✓ *APPARENT—KO'RINIB TURIBDI*
- ✓ *THEREFORE—SHU SABABDAN*
- ✓ *REDUCTION—QISQARISH*
- ✓ *CONSEQUENTLY—NATIJASIDA*
- ✓ *OCCUR—SODIR BO'LMOQ*
- ✓ *RATION—RATSION*
- ✓ *ROUGHAGE—QO'POL EM*
- ✓ *HAY—PICHAN, HASHAK*
- ✓ *STRAW—POXOL*
- ✓ *SUPPLEMENT—QO'SHISH*



***FEED IS KNOWN TO BE THE MOST COSTLY SINGLE ITEM IN GROWING CATTLE, OFTEN REPRESENTING 70 TO 80% OF THE TOTAL COST OF GAIN.***



***IT IS APPARENT THEREFORE THAT ANY REDUCTION IN FEED COSTS HAS A LARGE INFLUENCE ON TOTAL COST OF GAIN AND, CONSEQUENTLY, PROFIT.***



***GREAT CHANGES HAVE OCCURRED IN THE CATTLE FEEDING INDUSTRY WITH THE ARRIVAL OF BIG FEEDLOTS. THE USE OF COMPLETE RATIONS I.E. RATIONS CONSISTING OF ROUGHAGE, SUCH AS HAY OR STRAW, GRAIN AND SUPPLEMENTS COMBINED INTO A COMPLETE MIXED FEED HAS INCREASED MARKEDLY.***



***THE COMPLETE DIET SYSTEM IMPLIES THE SELF FEEDING OF A UNIFORM MIXTURE OF FEED INGREDIENTS POSSESSED IN SUCH A WAY AS TO AVOID DIFFERENTIAL SELECTION BY THE ANIMAL. IN THE FEEDING OF DAIRY CATTLE PARTICULARLY, IT IS A RADICAL DEPARTURE FROM THE ATTEMPT TO GIVE FEED INGREDIENTS SEPARATELY, WITH CONCENTRATES CLOSELY RATIONED ON AN INDIVIDUAL BASES..***



# ***COMPLETE DIET SYSTEM***

***THE AIM OF SUCH FEEDING IS TO  
SIMPLIFY THE FEEDING  
PROCEDURES AND THE SAME  
TIME TO RETAIN ALL THE  
ESSENTIALS OF EFFICIENT FEEDING  
FOR HIGH PRODUCTION.***



***IT IS NOT CLAIMED THAT THE SYSTEM WILL ACHIEVE HIGHER PRODUCTION THAN IS POSSIBLE WHEN EACH ANIMAL IS FED WITH MAIN AND EXTRA FEEDS INDIVIDUALLY.***

## **AJRATIB KO'RSATILGAN SO'ZLARGA E'TIBOR BERING VA ULARNI TARJIMA QILING:**

***1. The cows produced more milk as they were supplied with extra feeds. 2. The actual milk yield was higher on the farm last year than it had been planned. 3. One should carefully analyse the data given in table 3. 4. In the article there is an interesting figure showing the change of milk yields in recent years. 5. The main object of their work is to increase crop yields.***

# ***QAVS ICHIDAGI SO'ZLARDAN FOYDALANIB SAVOLLAR BERING:***

***1. THE LAST REPRESENTATIVE OF THE WILD CATTLE DIED AT THE BEGINNING OF THE 17TH CENTURY (WHEN). 2. DOMESTICATED CATTLE BELONG TO THE FAMILY BOVIDAE (WHAT FAMILY). 3. BREEDING DOMESTIC ANIMALS IS DONE UNDER HUMAN MANAGEMENT AND CONTROL (HOW). 4. THE HORSE WAS PERHAPS DOMESTICATED IN CENTRAL ASIA (WHERE). 5. DRAFT ANIMALS HAVE PRACTICALLY DISAPPEARED (WHY). 6. ANIMALS HAVE BEEN DOMESTICATED FOR THREE MAIN PURPOSES (HOW MANY). 7. THE DOG DRAWS SLEDGES IN AMERICA (WHERE). 8. CATTLE ARE USED NOW MOSTLY FOR FOOD (WHAT ... FOR). 9. GREAT EXPERIENCE HAS BEEN GAINED IN IMPROVING FARM ANIMALS (WHAT EXPERIENCE).***