

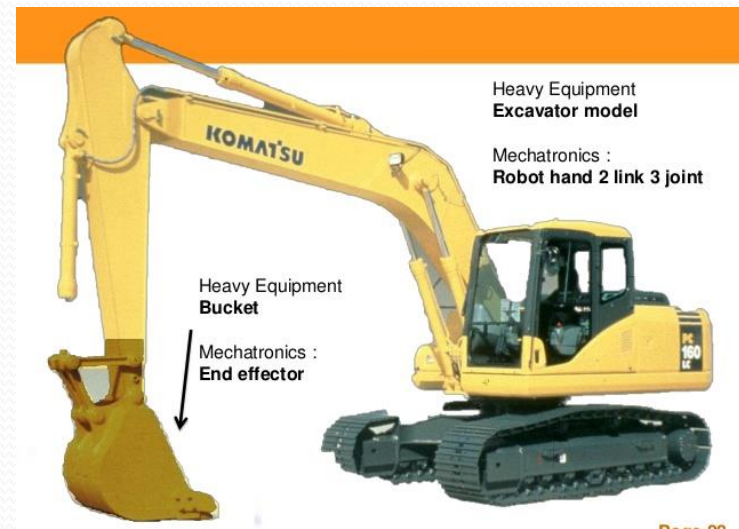
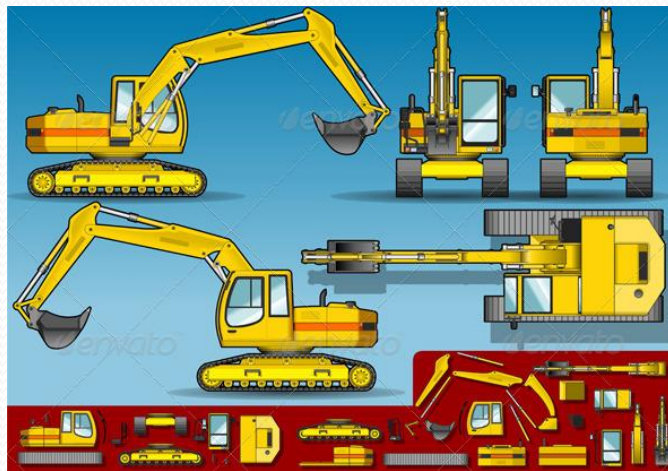
Theme: Construction machinery

Done by: Juraeva S.

Checked by: Sobirova K.

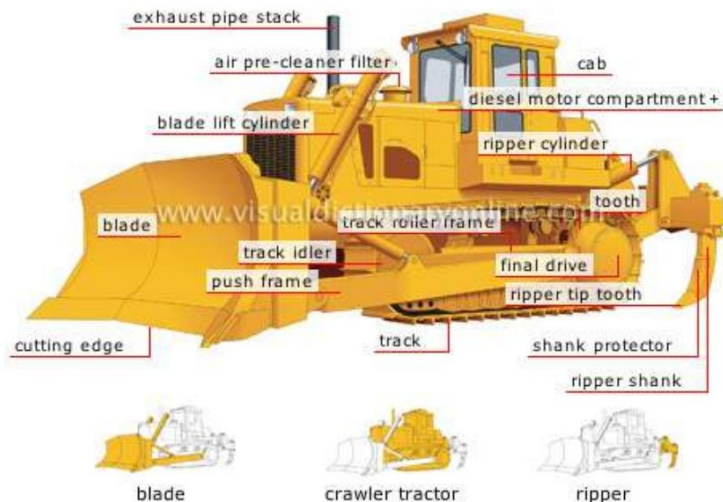
Excavators

- Excavators (Hydraulic Excavators) are heavy construction equipment consisting of a boom, dipper (or stick), bucket and cab on a rotating platform known as the "house". The house sits atop an undercarriage with tracks or wheels.



WHAT IS BULLDOZER

- Machines designed preliminary for cutting & pushing material relatively short distance.
- Consist of a tractor with a front mounted blade controlled by hydraulic cylinders use for different cut for different depth & leveling as per condition of land.

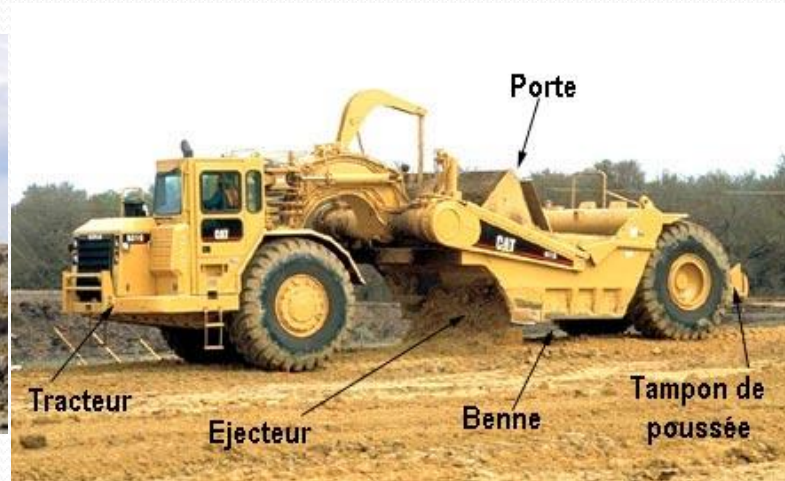


WHEEL TRACTOR MOUNTED BULLDOZERS



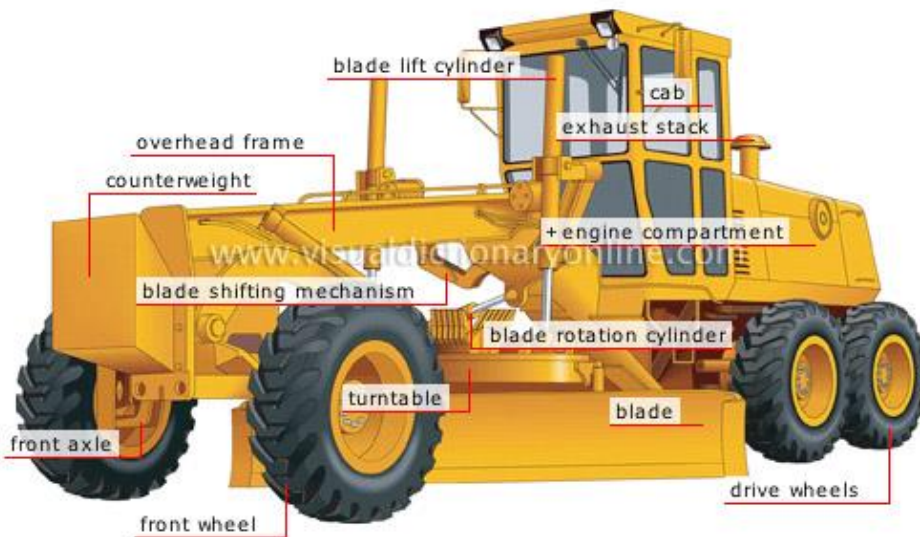
Scraper

- The scraper is an earthmoving machine used for soft soil.
- When it can be used this is the ideal piece of earthmoving machinery as it loads, transports and spreads material. Unfortunately it cannot be used to transport materials over long distances because of heating of the tyres. It cannot be used on rocky ground either as this causes excessive wear.



Grader

A **grader**, also commonly referred to as a **road grader**, a **blade**, a **maintainer**, or a **motor grader**, is a **construction machine** with a long blade used to create a flat surface during the **grading** process. Typical models have three **axles**, with the **engine** and **cab** situated above the rear axles at one end of the vehicle and a third axle at the front end of the vehicle, with the **blade** in between. In certain countries, for example in **Finland**, almost every grader is equipped with a second blade that is placed in front of the front axle.





- Graders are commonly used in the construction and maintenance of dirt roads and gravel roads. In the construction of paved roads they are used to prepare the base course to create a wide flat surface upon which to place the asphalt. Graders are also used to set native soil foundation pads to finish grade prior to the construction of large buildings.