

# THAs, THKs Thermocouples

Entered into the State Register of measuring instruments under # # 15636-96, 15637-96, 16263-97.

## GENERAL DATA FOR THAs, THKs THERMOCOUPLES

### RESISTANCE TO TEMPERATURE AND AMBIENT HUMIDITY

Temperature and air humidity resistant version: U3  
per GOST 15150.

### VERIFICATION

Interval: 2 years maximum.  
Procedure: per GOST 8.338.

### EXPECTED LIFE

Mean time between failures: 50000 h. minimum.  
Total life time: 5 years minimum.

## ORDERING INFORMATION

**THKs-0187 - Fig.1 - (-50...500)°C - HK(L) - 2 - 1SE - 100(2000) mm - 12Cr18Ni10Ti - TU... - P**

1 2 3 4 5 6 7 8 9 10

1. Thermocouple type.
2. Design Figure.
3. Operating temperature range.
4. Standard curve.
5. Tolerance class.
6. Number of sensing elements.
7. Immersion length (if required: L1 or I).
8. Protection fitting material.
9. Specifications.
10. Metrological verification:

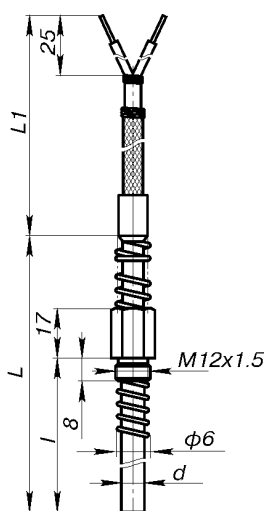
**GP** - verification by GosStandard Authorities;  
**P** - metrological verification by manufacturer.

Thermocouple	TU Number
THKs-0187 THAs-706-02 THAs/THKs-2588 THKs-2788	TU 4211-007-12296299-96

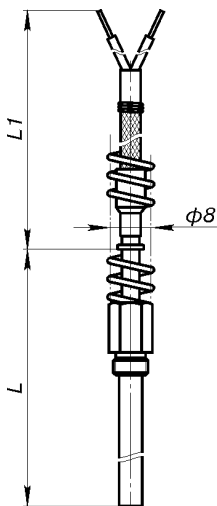
**THKs-0187**

**Application:** for heads housing temperature measurement of worm press in plastics processing.

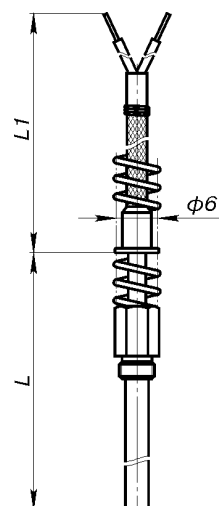
Specifications	THKs-0187
Measured temperature range, °C	-50...500
Standard curve	L
Tolerance class	2
Max. pressure, MPa	0.25
Thermal inertia index, max, s	5
Number of sensing elements	1
Dust and water tightness per GOST 14254	IP54
Protection fitting material	12Cr18Ni10Ti
Weight, kg	0.14...0.3



**Fig. 1.**



**Fig. 2.**  
refer to Fig.1.



**Fig. 3.**  
refer to Fig.1.

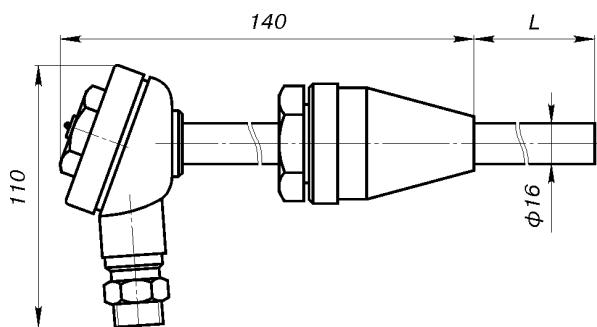
Fig.	L, mm	L1, mm	d, mm
1	100	2000, 4000	4
2	200, 320, 400, 500, 630, 800, 1000, 1250, 1600, 2000, 2500, 3150		3
3			3.2

**THAs-706-02**

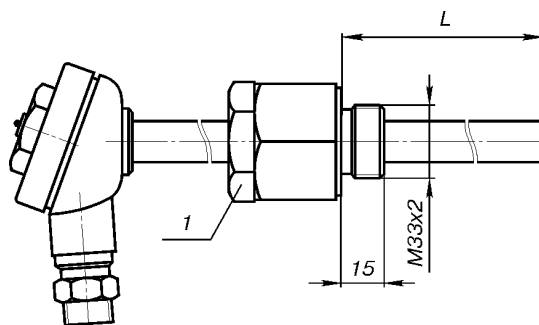
**Application:** for temperature measurement of top and peripheral smoke and blast furnace inwall lining in blast-furnace process.

Specifications	THAs-706-02
Measured temperature range, °C	-40...800
Standard curve	K
Tolerance class	2
Max. pressure, MPa	1.6
Thermal inertia index, max, s	50
Number of sensing elements	1 (Fig.1, 2); 2 (Fig.3, 4)
Hot junction	insulated
Dust and water tightness per GOST 14254	IP55
Weight, kg	0.8...4.7
Protection fitting material	CrNi45Al (up to 1050 °C) 12Cr18Ni10Ti (up to 800°C)

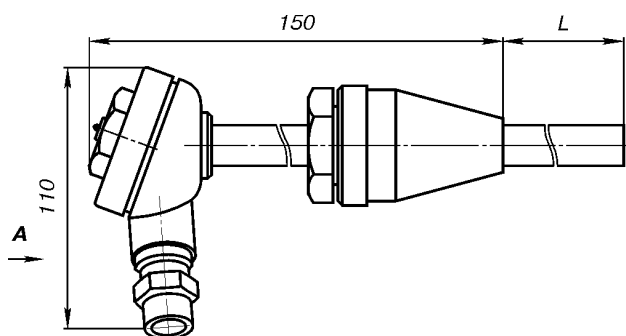
**Immersion lengths:**  
L = 320, 400, 500, 630, 800, 1000,  
1250, 1600, 2000, 2500 mm



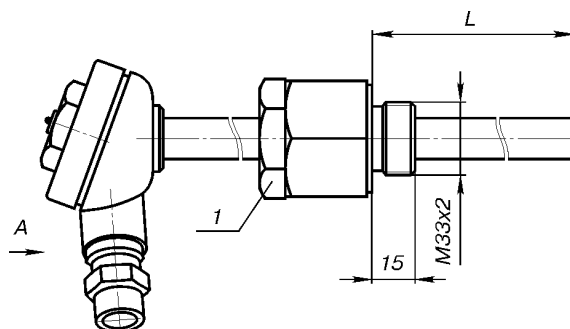
**Fig.1.**



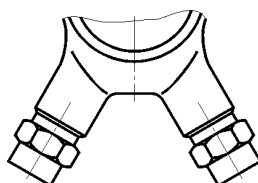
**Fig.2.**  
1 - adjustable connector



**Fig.3.**



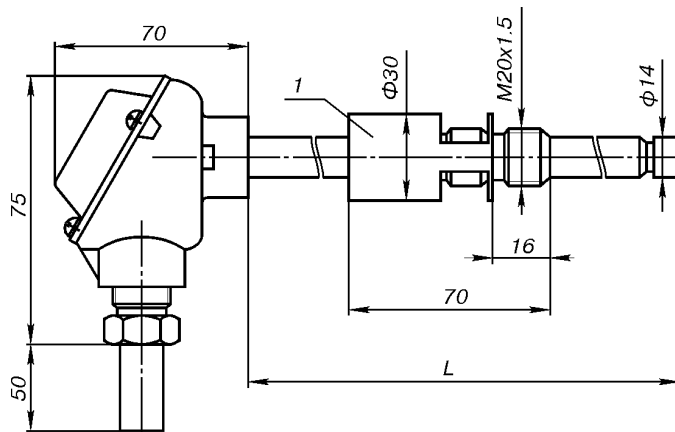
**Fig.4.**  
1 - adjustable connector



**THAs-2588, THKs-2588**

**Application:** for heads housing temperature measurement of worm press in plastics and rubber compounds processing.

Specifications	THAs-2588	THKs-2588
Measured temperature range, °C	-40...800	-40...600
Standard curve	K	L
Tolerance class	2	2
Thermal inertia index, max, s	40	
Number of sensing elements	1, 2	
Hot junction	insulated	
Dust and water tightness per GOST 14254	IP55	
Protection fitting material	12Cr18Ni10Ti	
Head material	aluminium	
Weight, kg	0.55...1.00	



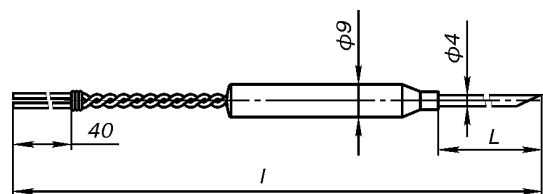
**Immersion lengths**  
 L = 120, 160, 200, 250, 320,  
 400, 500, 630, 800 mm

1 - adjustable connector with split terminal

**THKs-2788**

**Application:** for temperature measurement of sausages and another food in frying steam chest.

Specifications	THKs-2788
Measured temperature range, °C	-40...200
Standard curve	L
Tolerance class	2
Max. pressure, MPa	0.6
Thermal inertia index, max, s	5
Number of sensing elements	1
Dust and water tightness per GOST 14254	IP20
Protection fitting material	12Cr18Ni10Ti
Weight, kg	0.19



**Dimensions, mm**

L	I
60	6070
80	
100	