

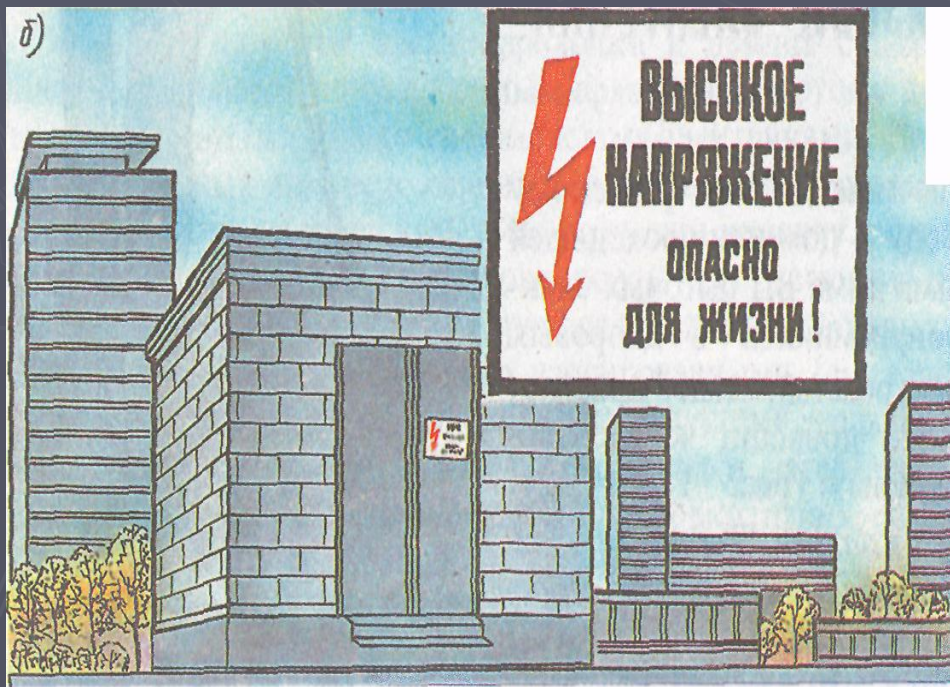
Мавзу:

Турмушда электр токи таъсирига тушиш ҳолатлари

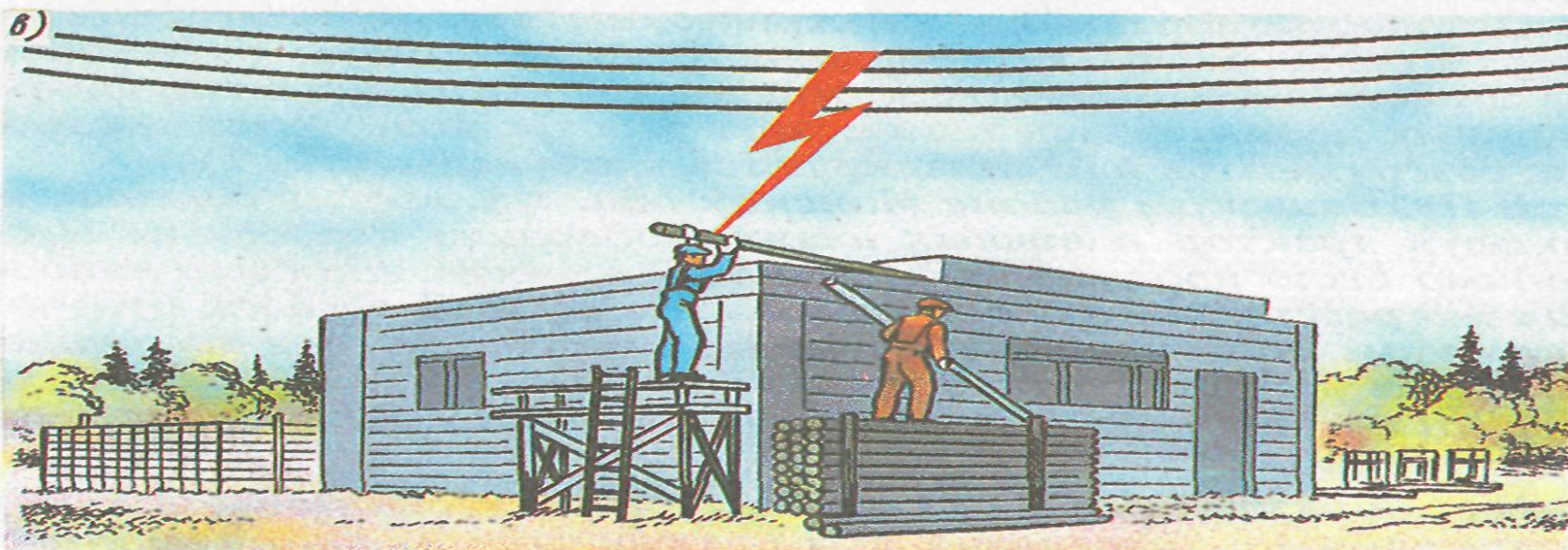
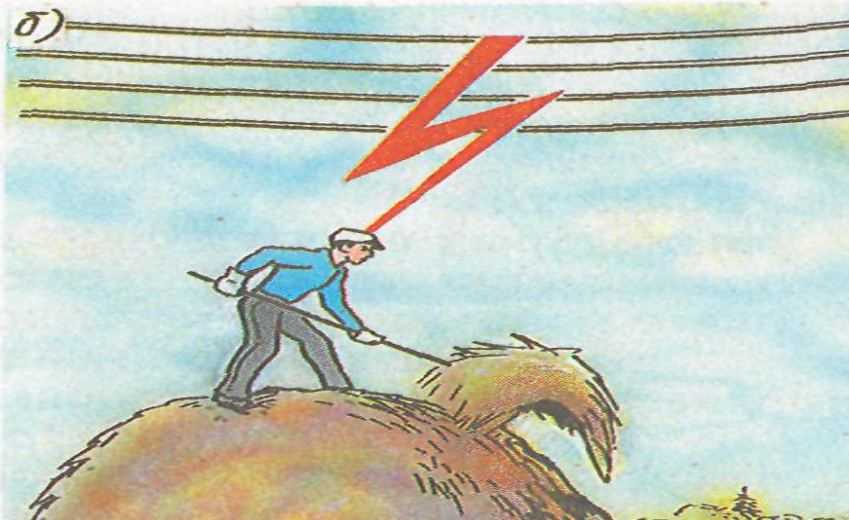
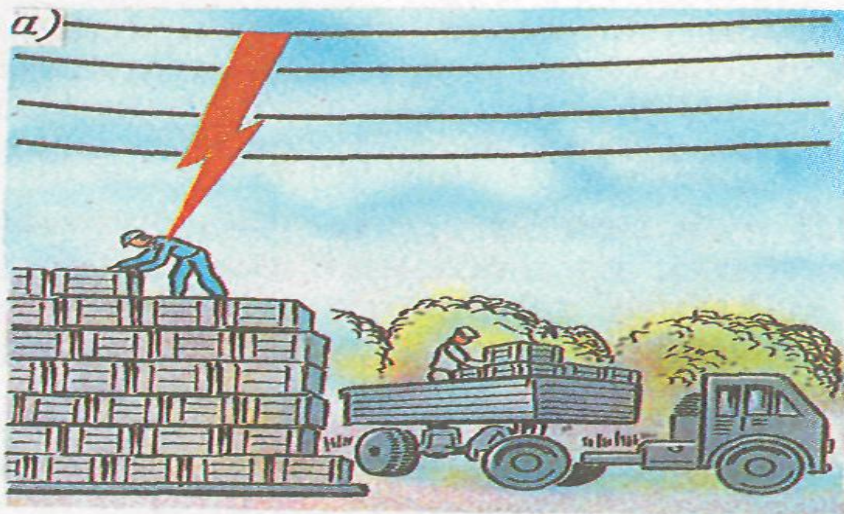


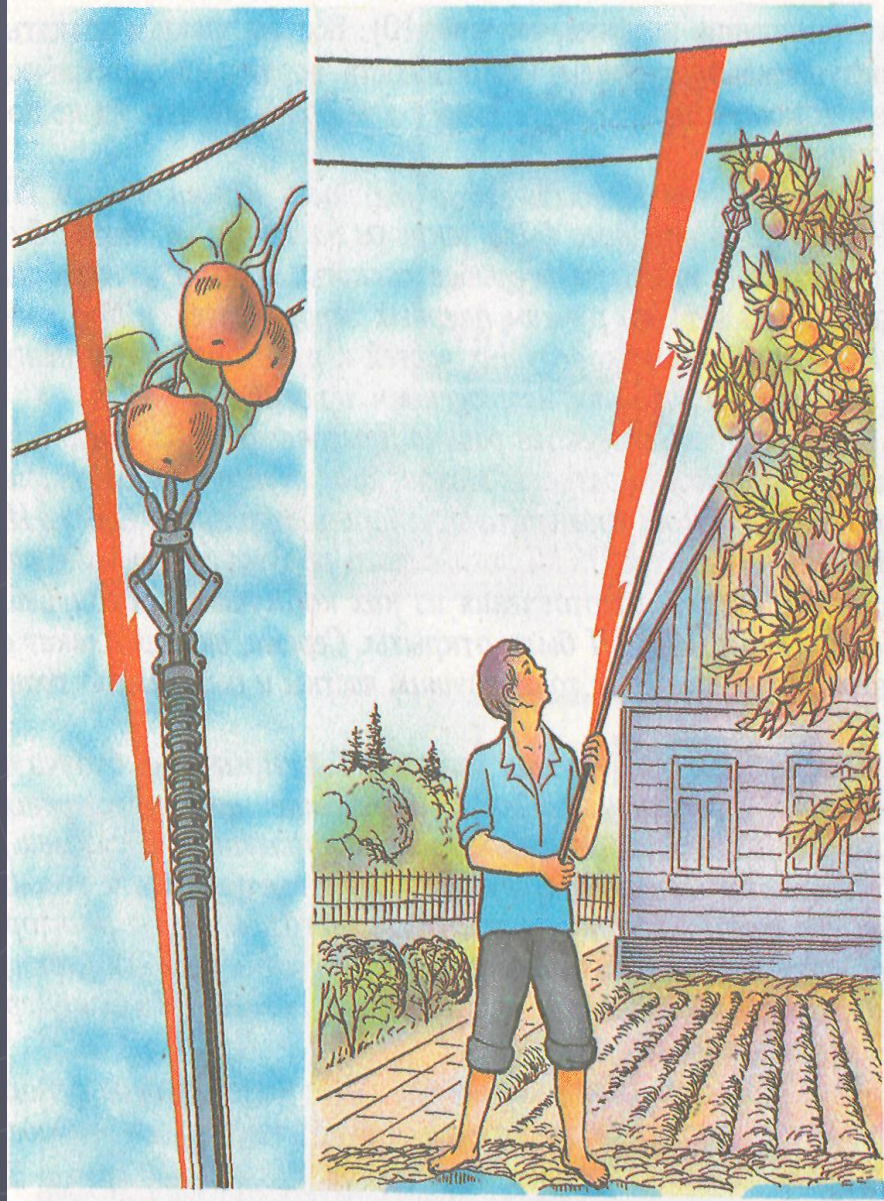
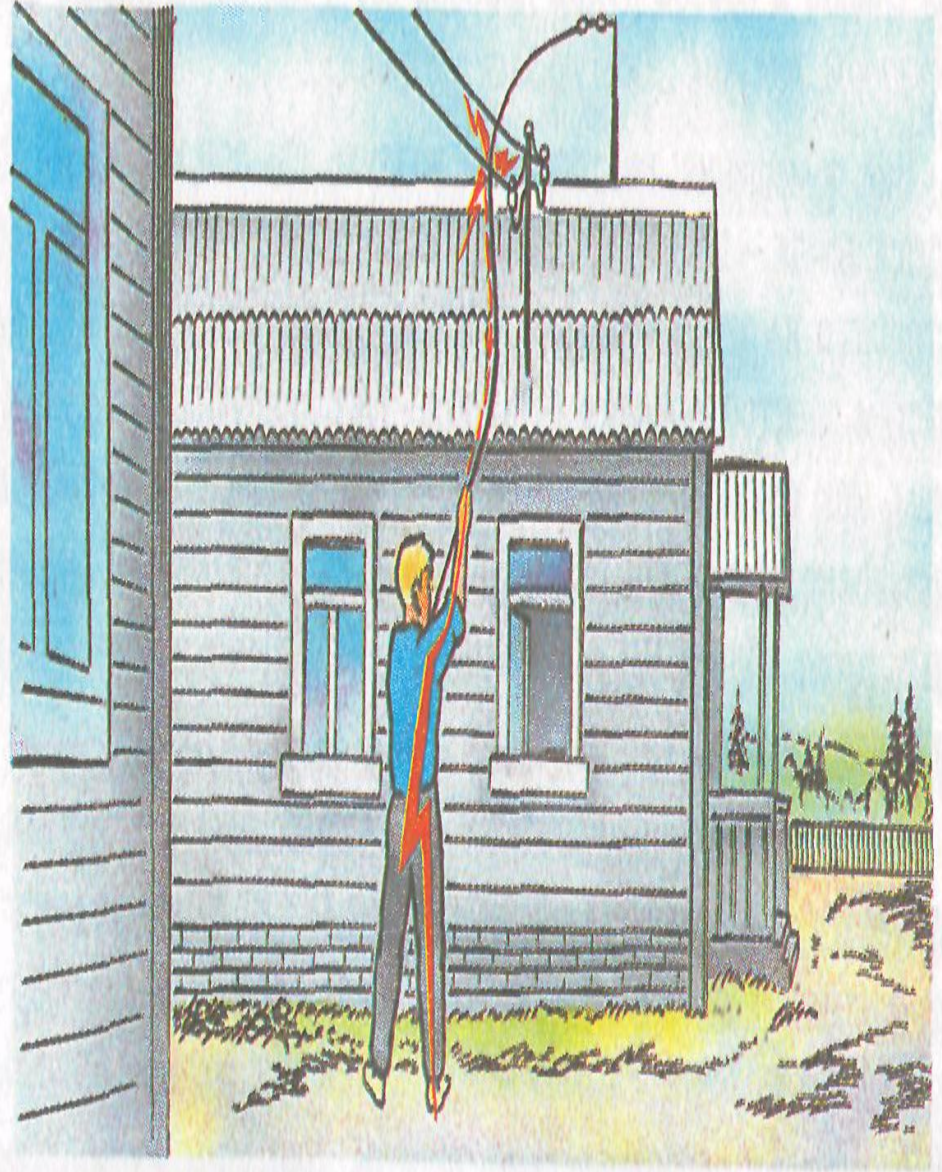
Режа:

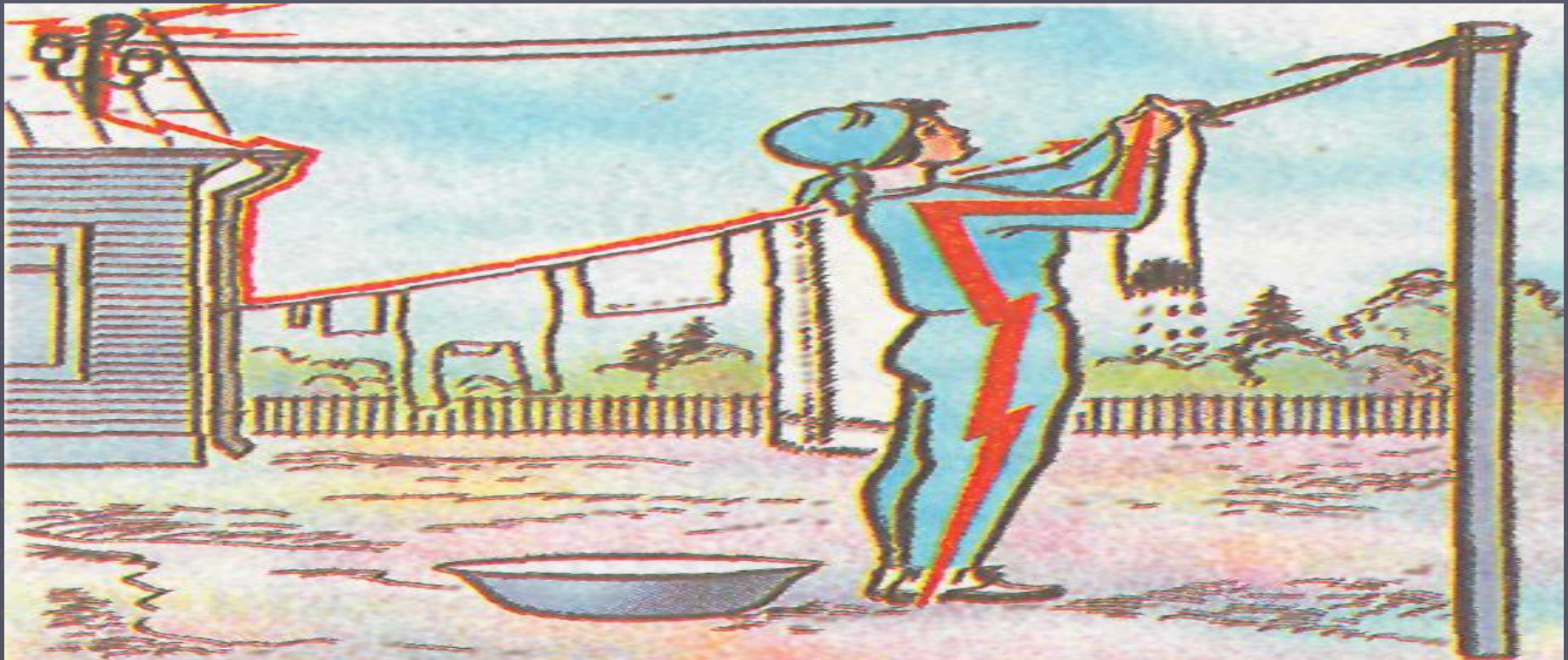
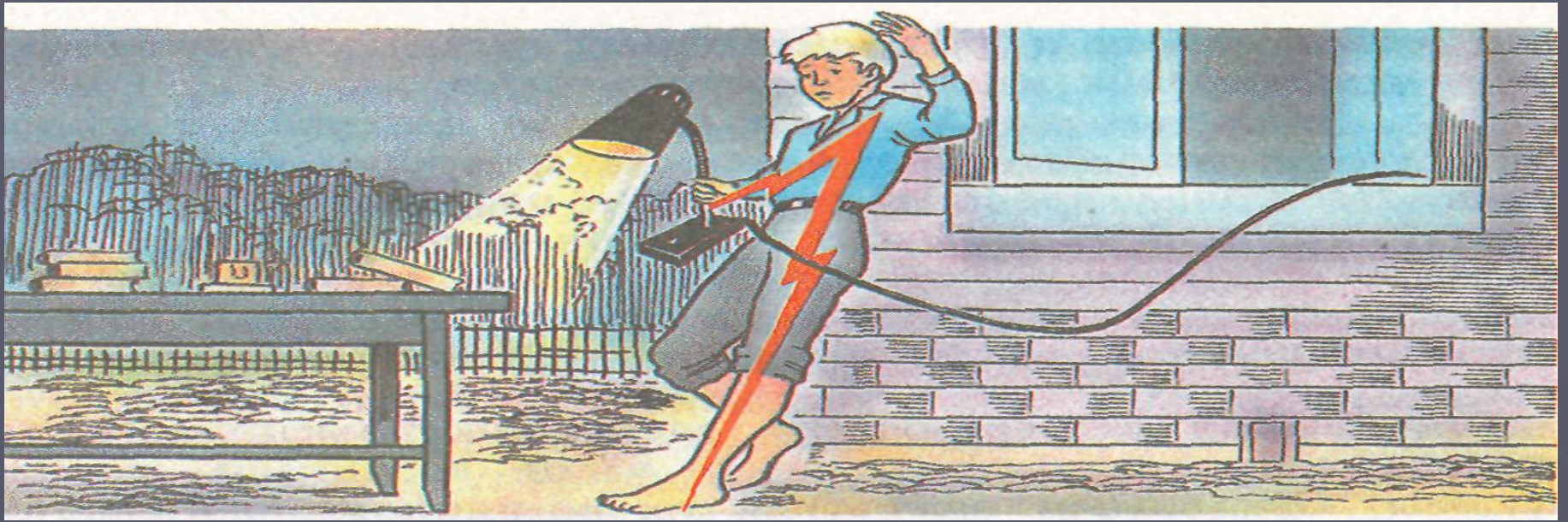
- ▶ 1. Ташқарида фаолият олиб борилаётганда ток таъсирига тушиш ҳолатлари.
- ▶ 2. Уй ичида фаолият олиб борилаётганда ток таъсирига тушиш ҳолатлари.
- ▶ 3. Одамларни ток таъсиридан қутқариш усуллари.
- ▶ Ток таъсирига тушганларга бирламчи ёрдам бериш қоидаси.

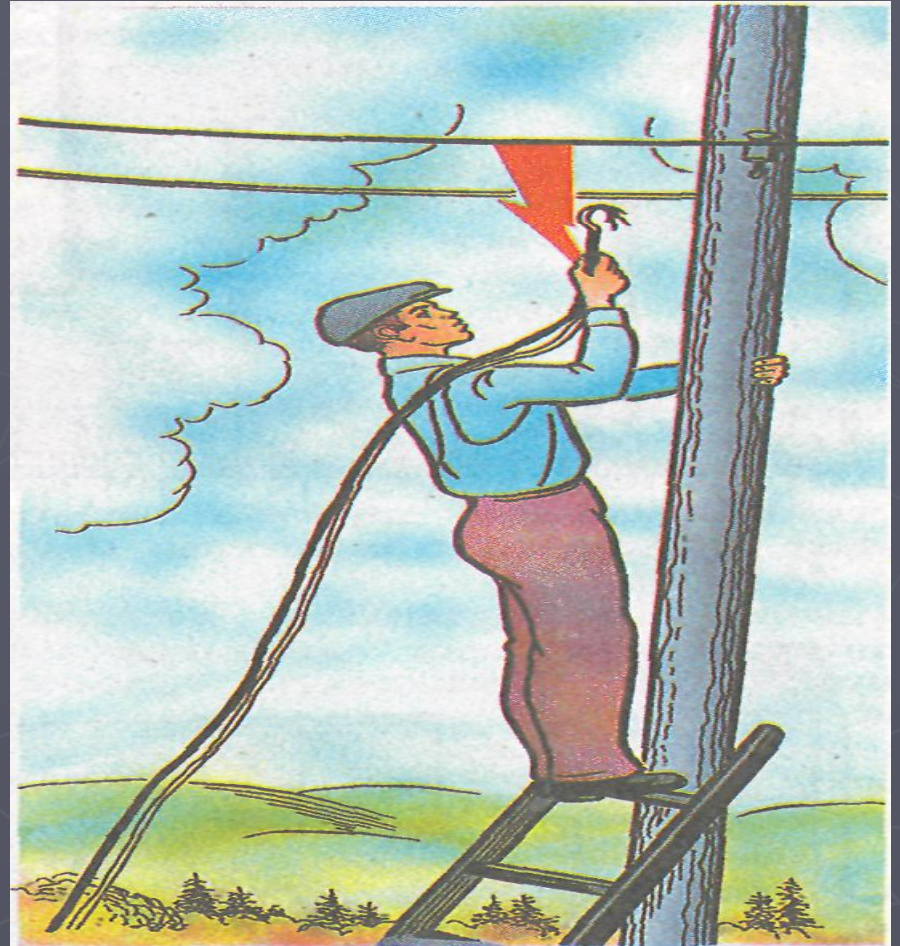
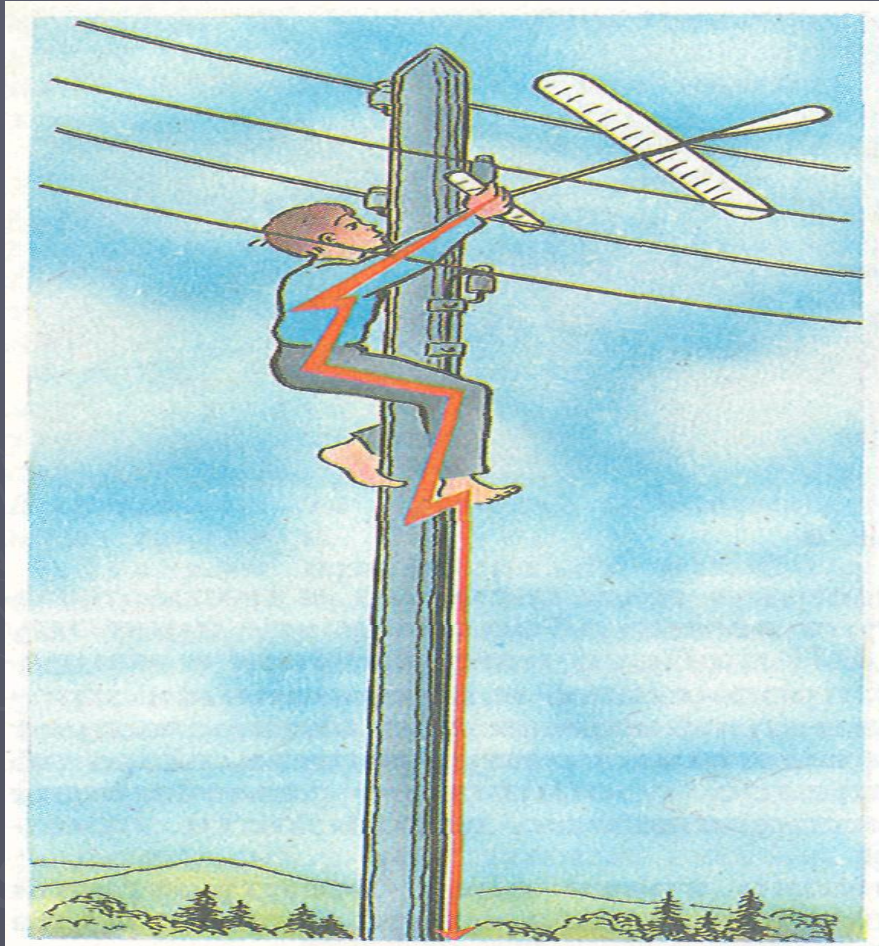


Ташқарида фаолият олиб борилаётганда ток таъсирига тушиш ҳолатлари.

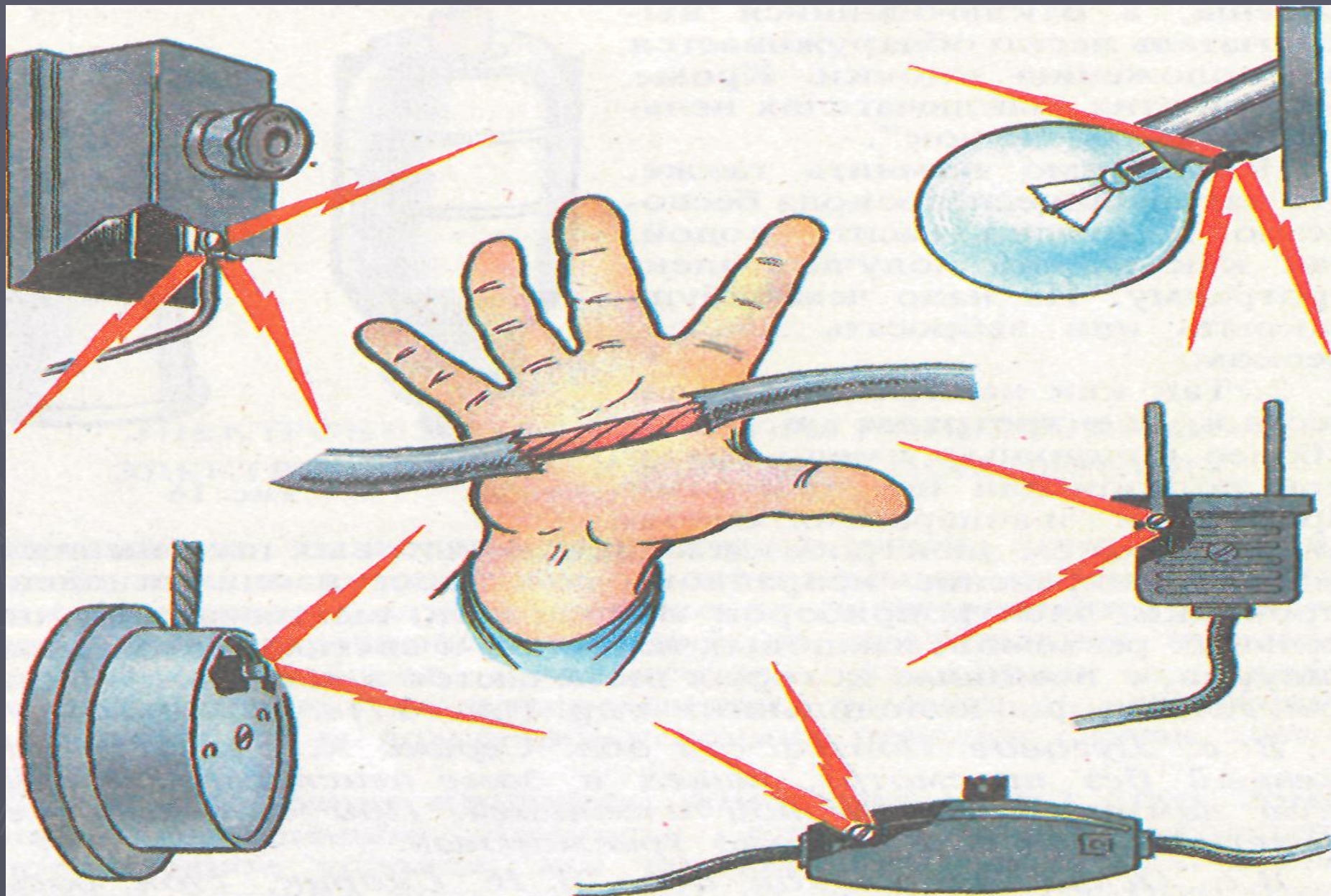


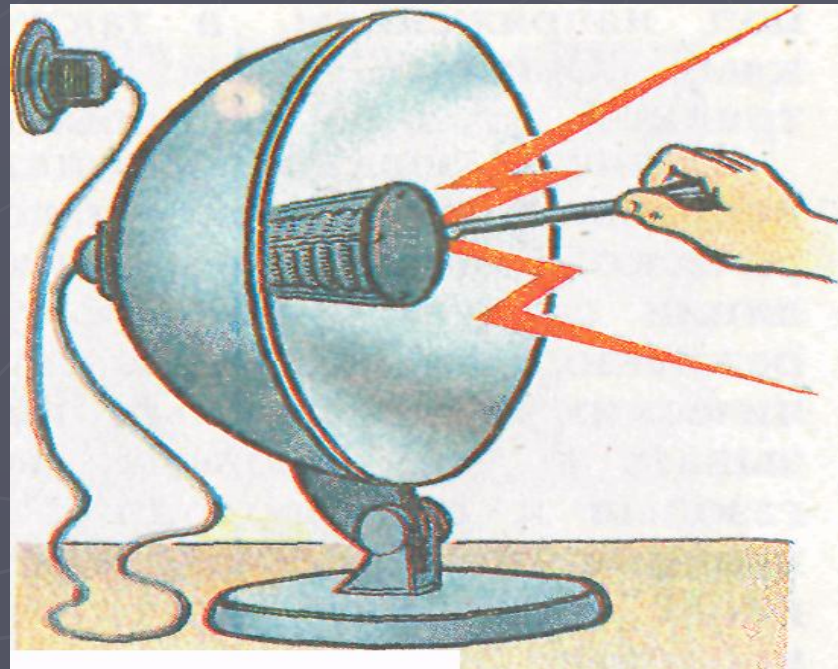
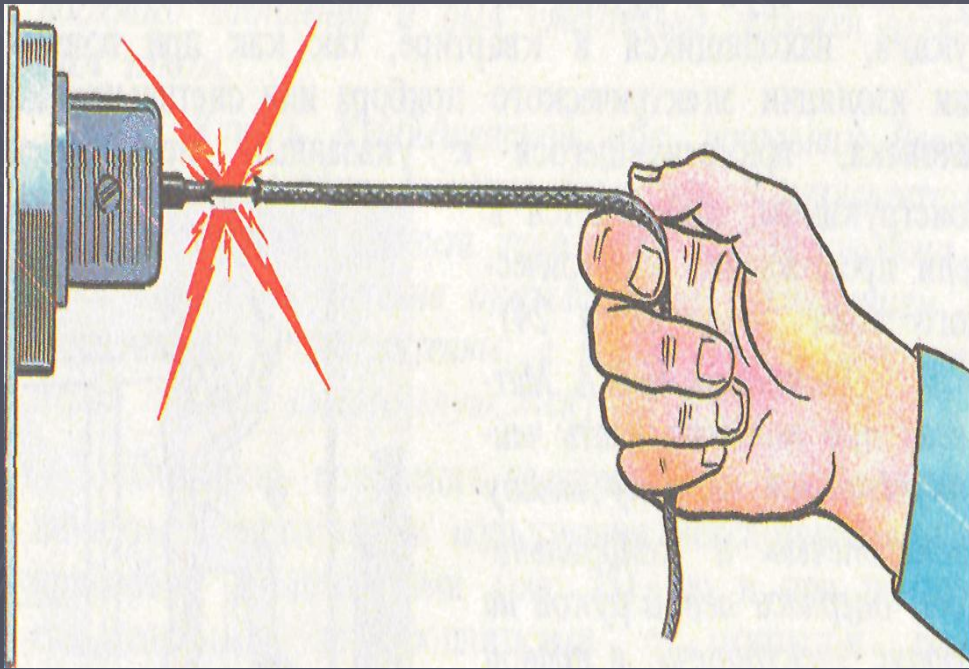
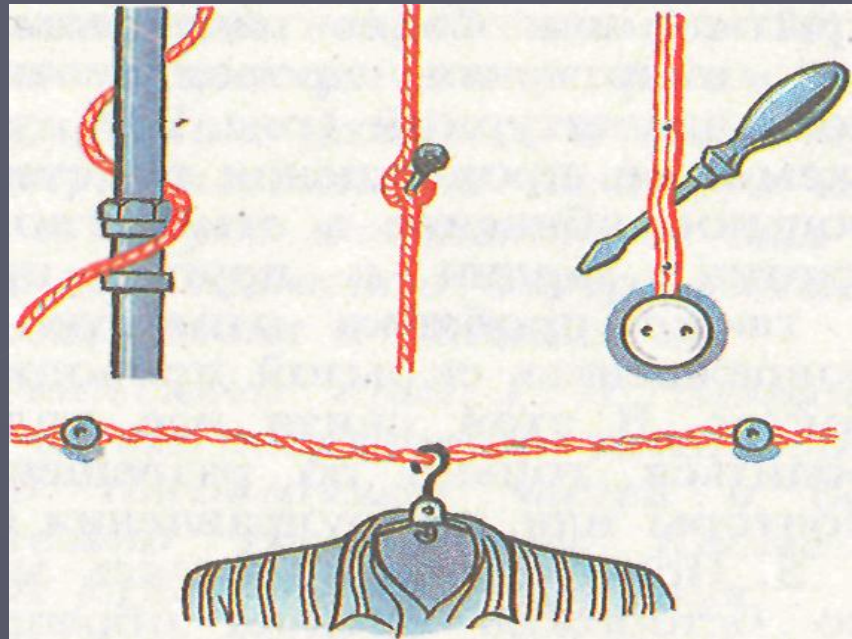
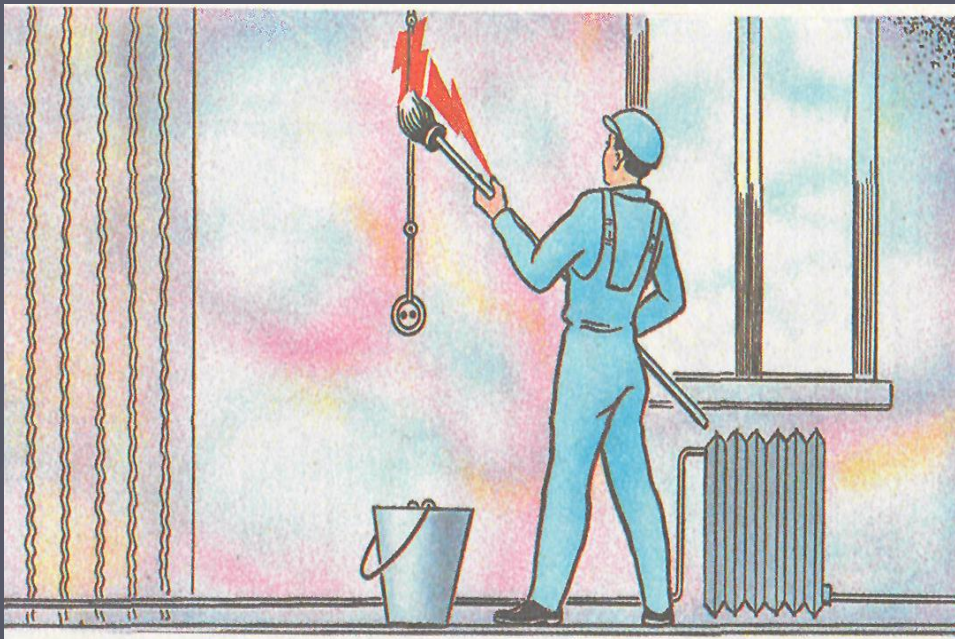


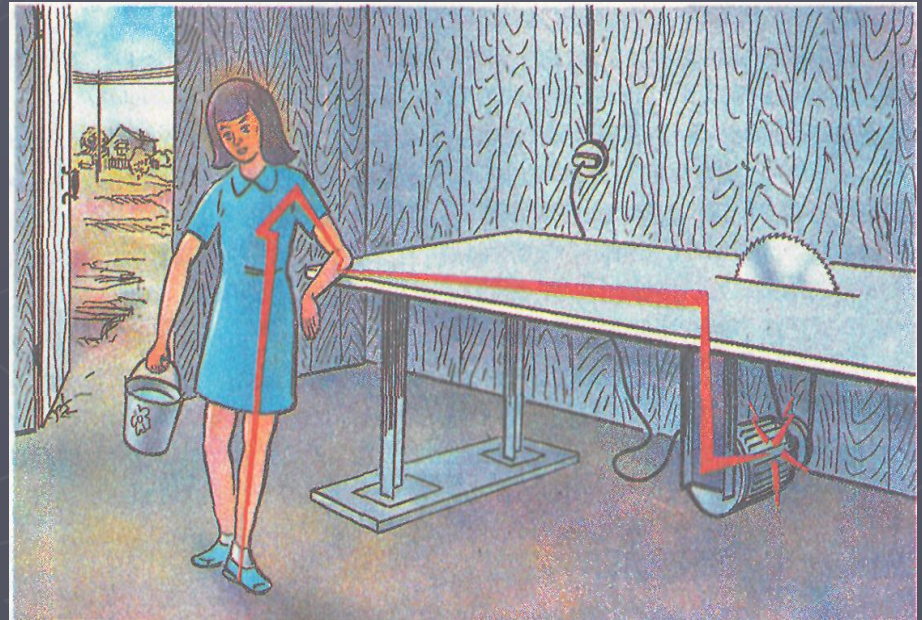
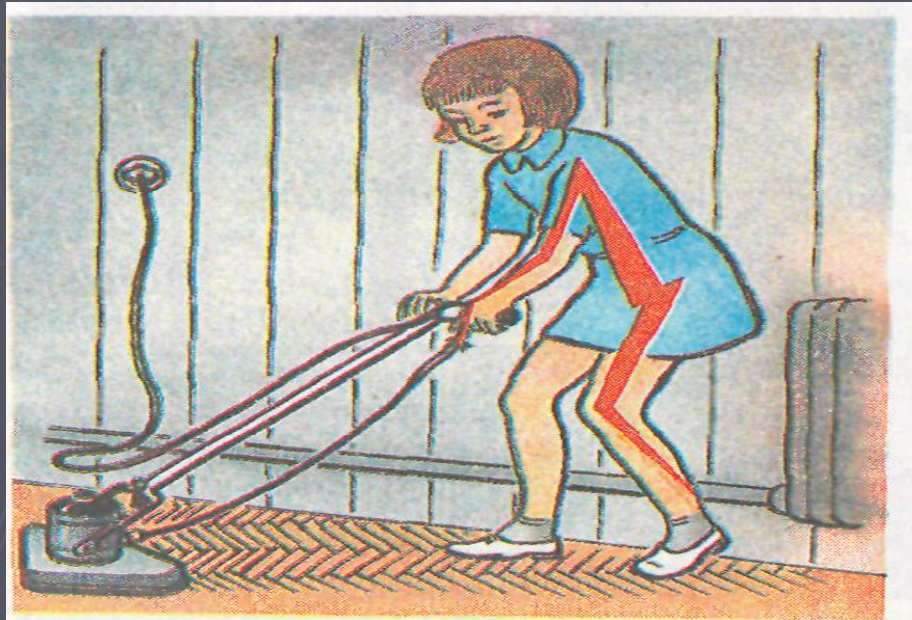
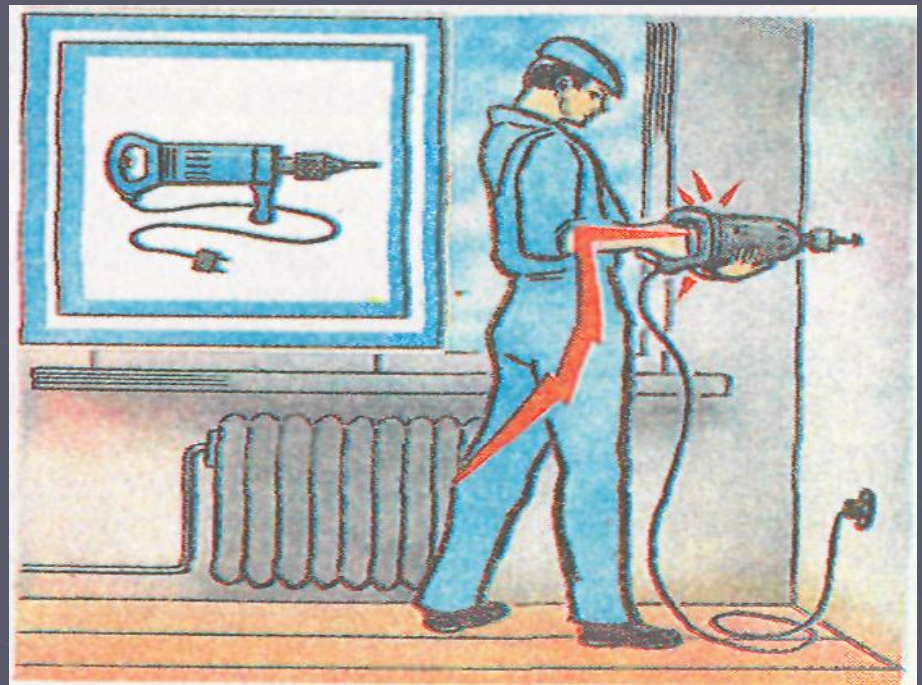
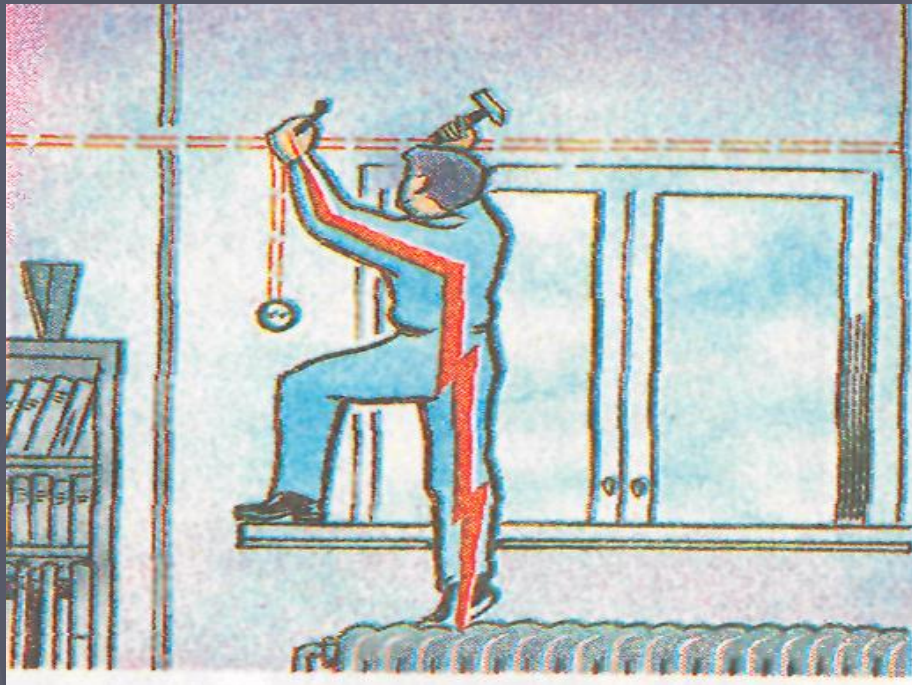


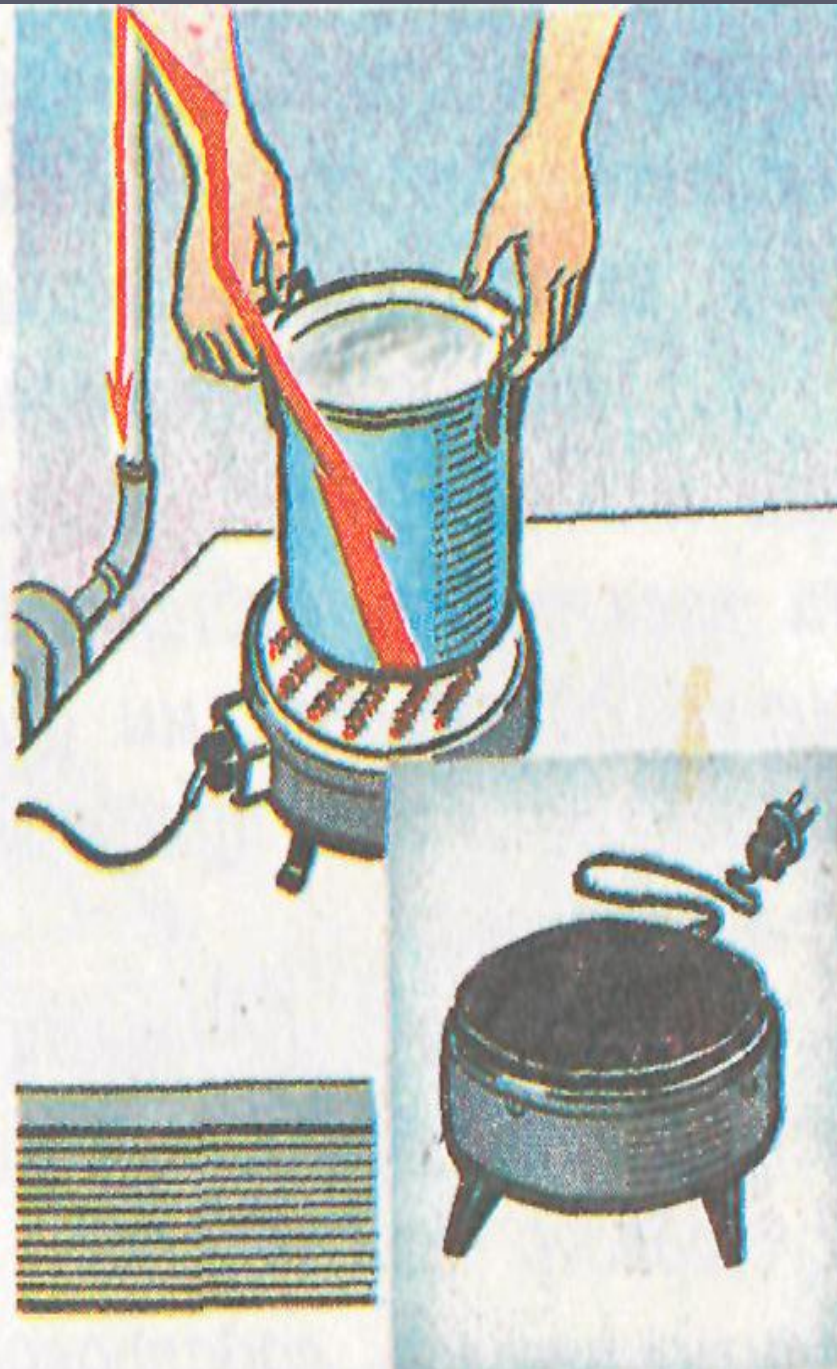
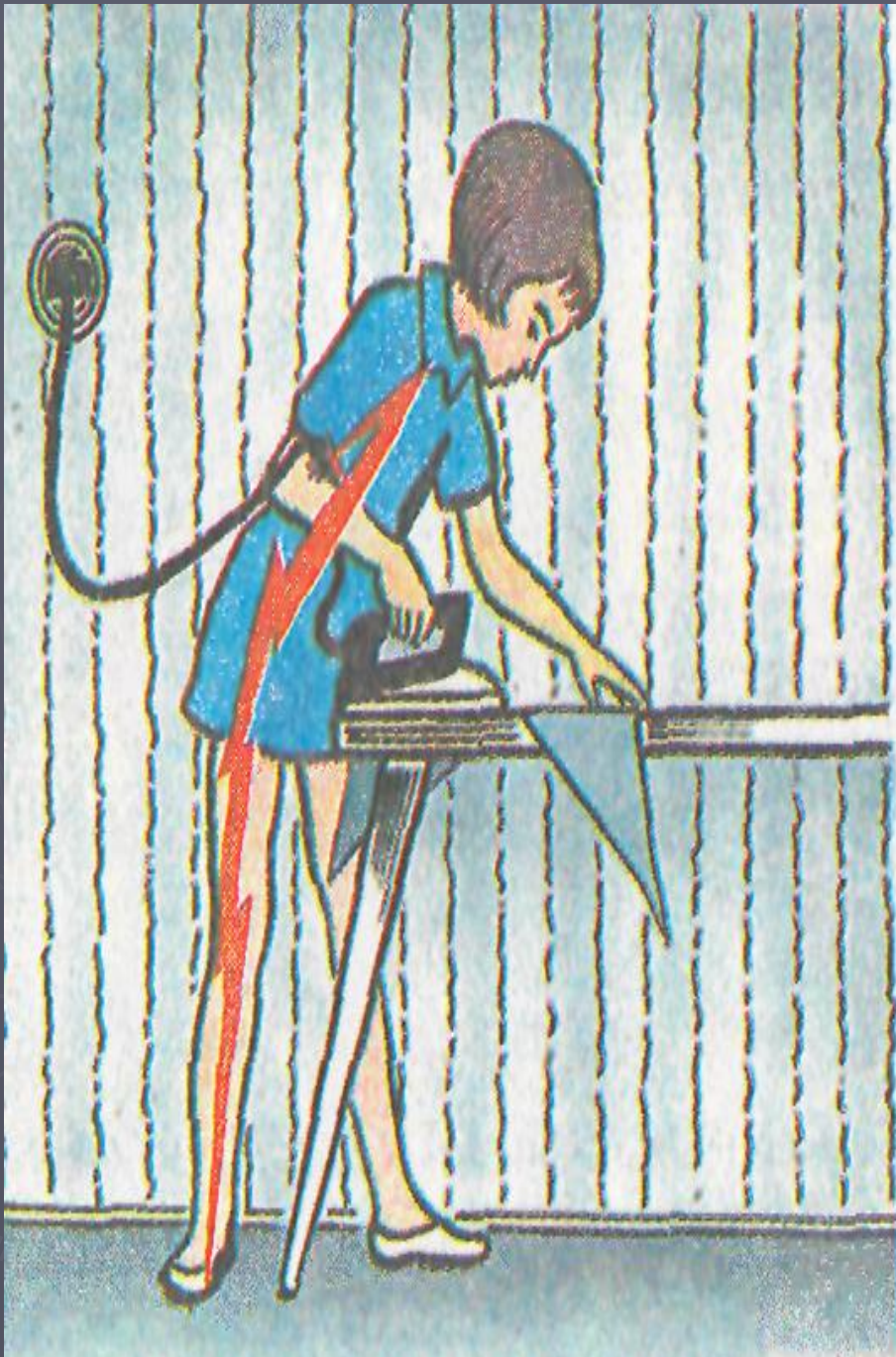


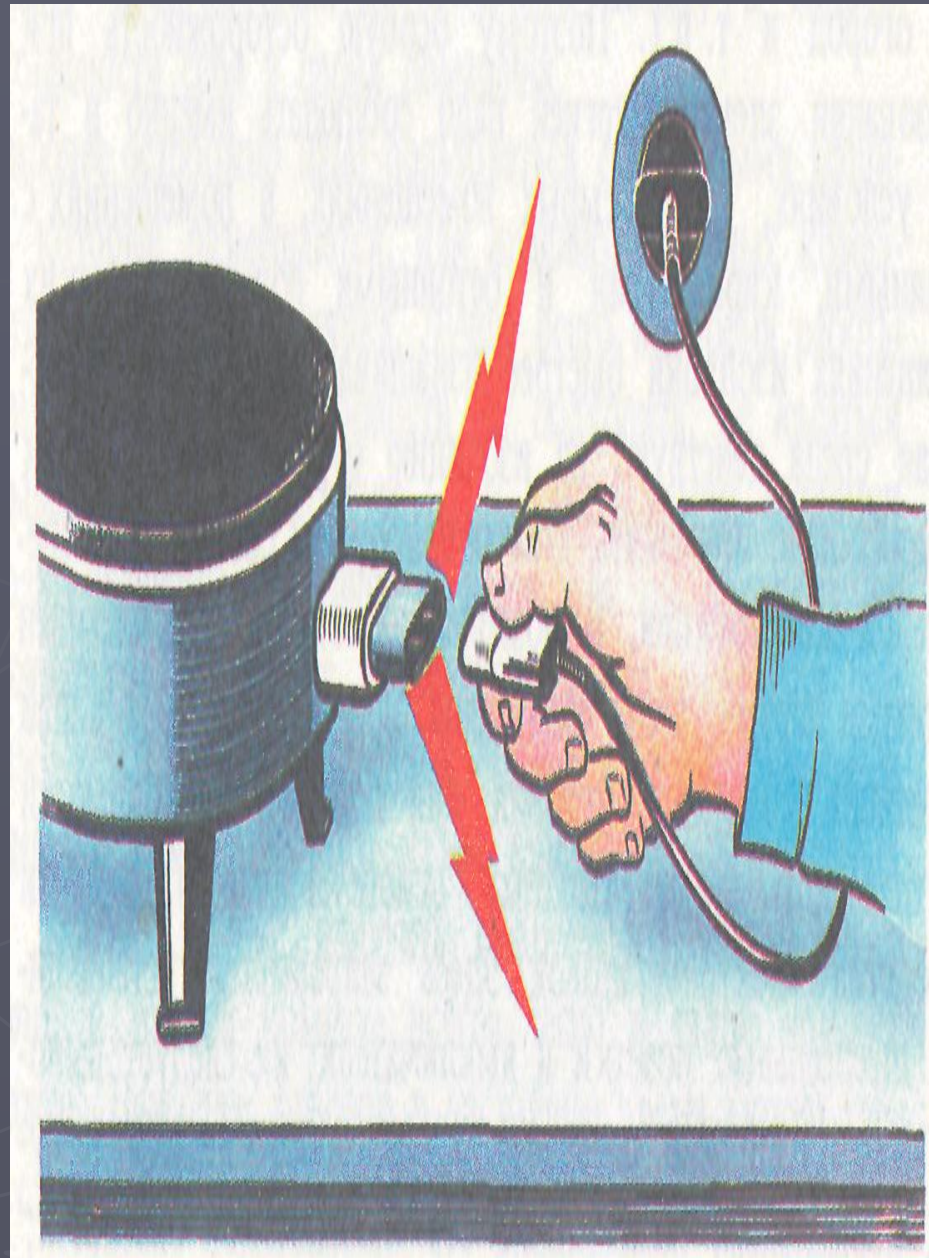
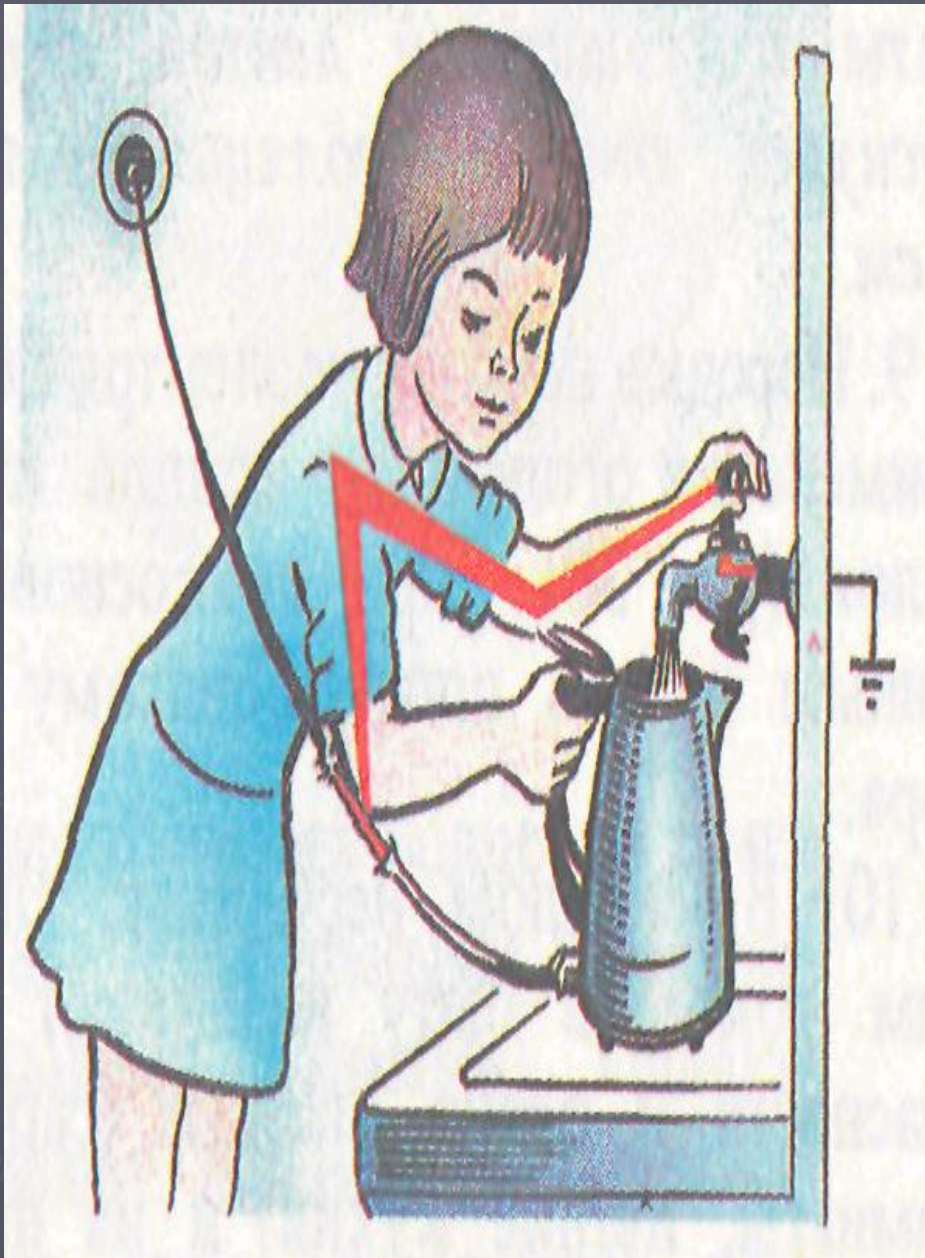
Уй ичкарасида электр токи таъсирига тушиш ҳолатлари ва сабаблари

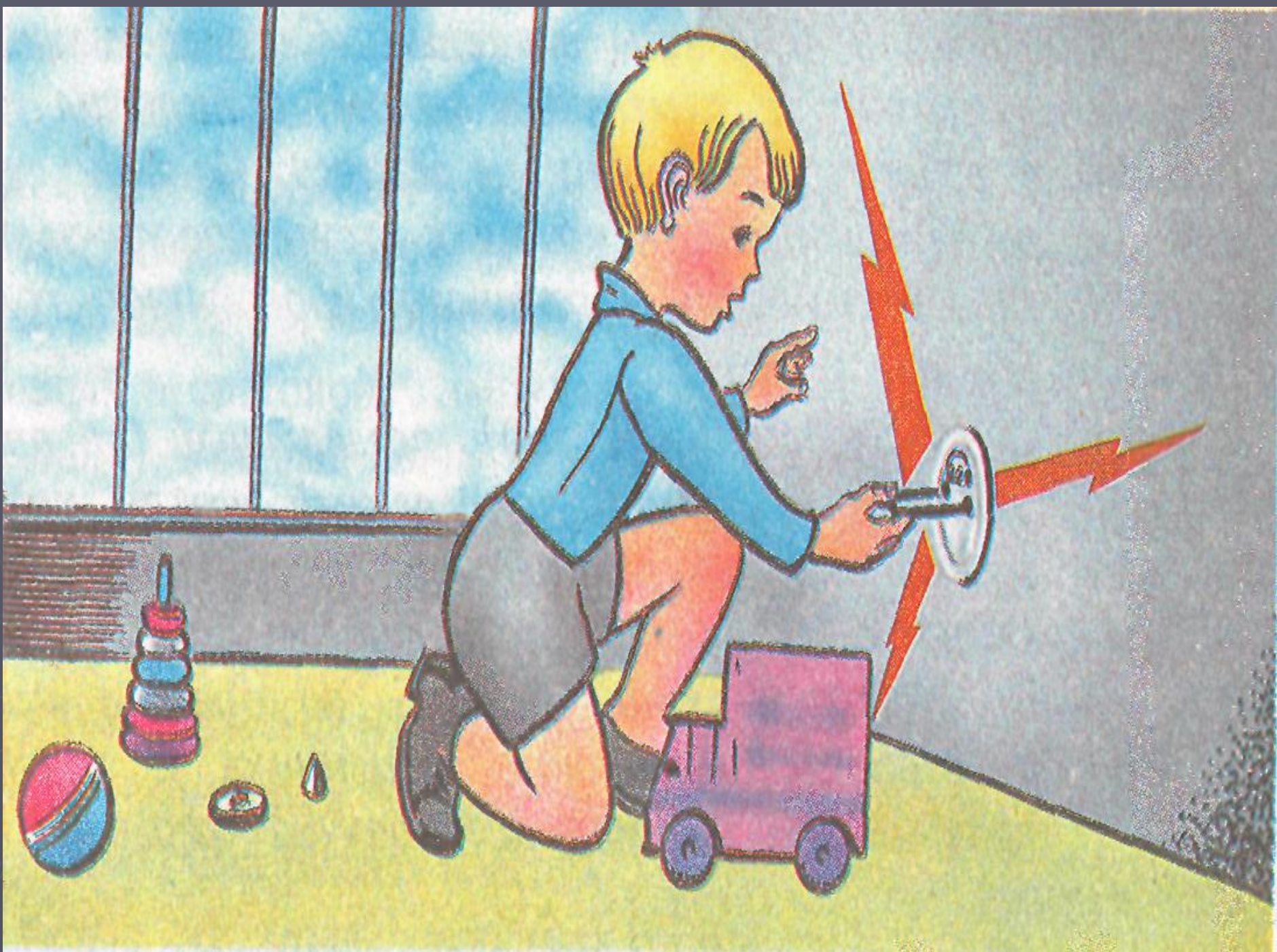




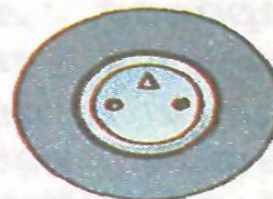
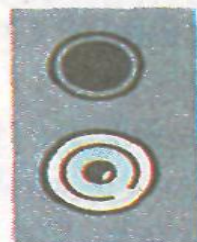
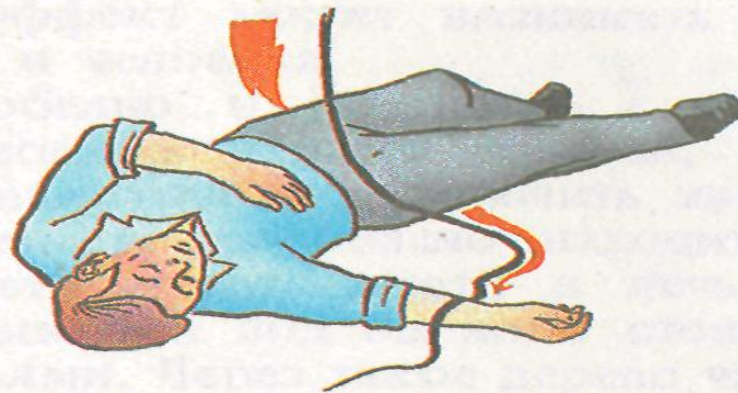
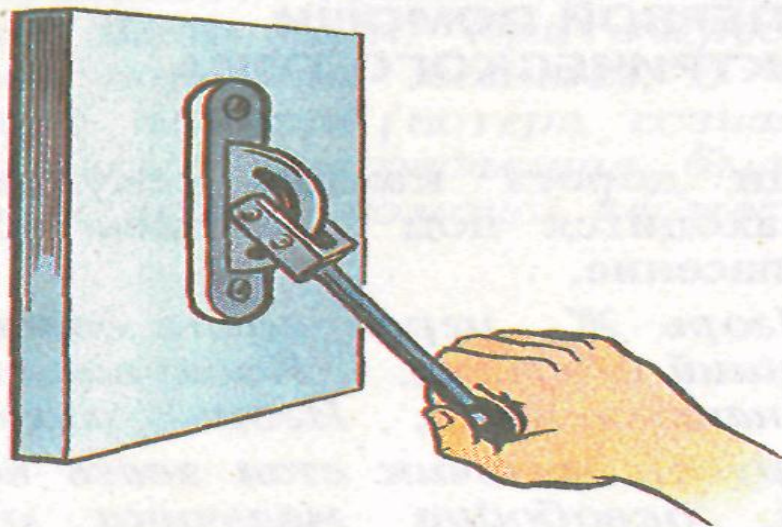
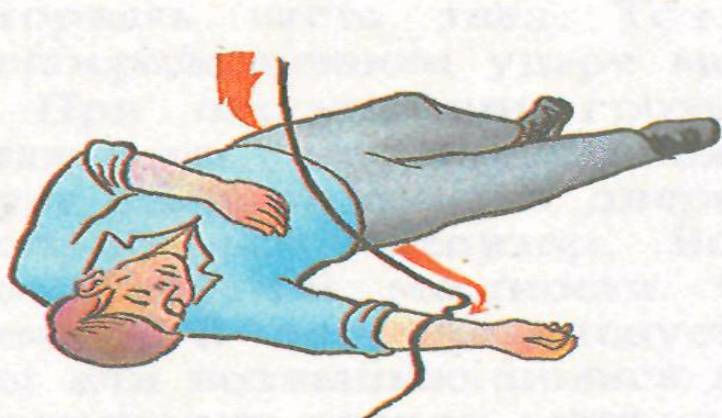


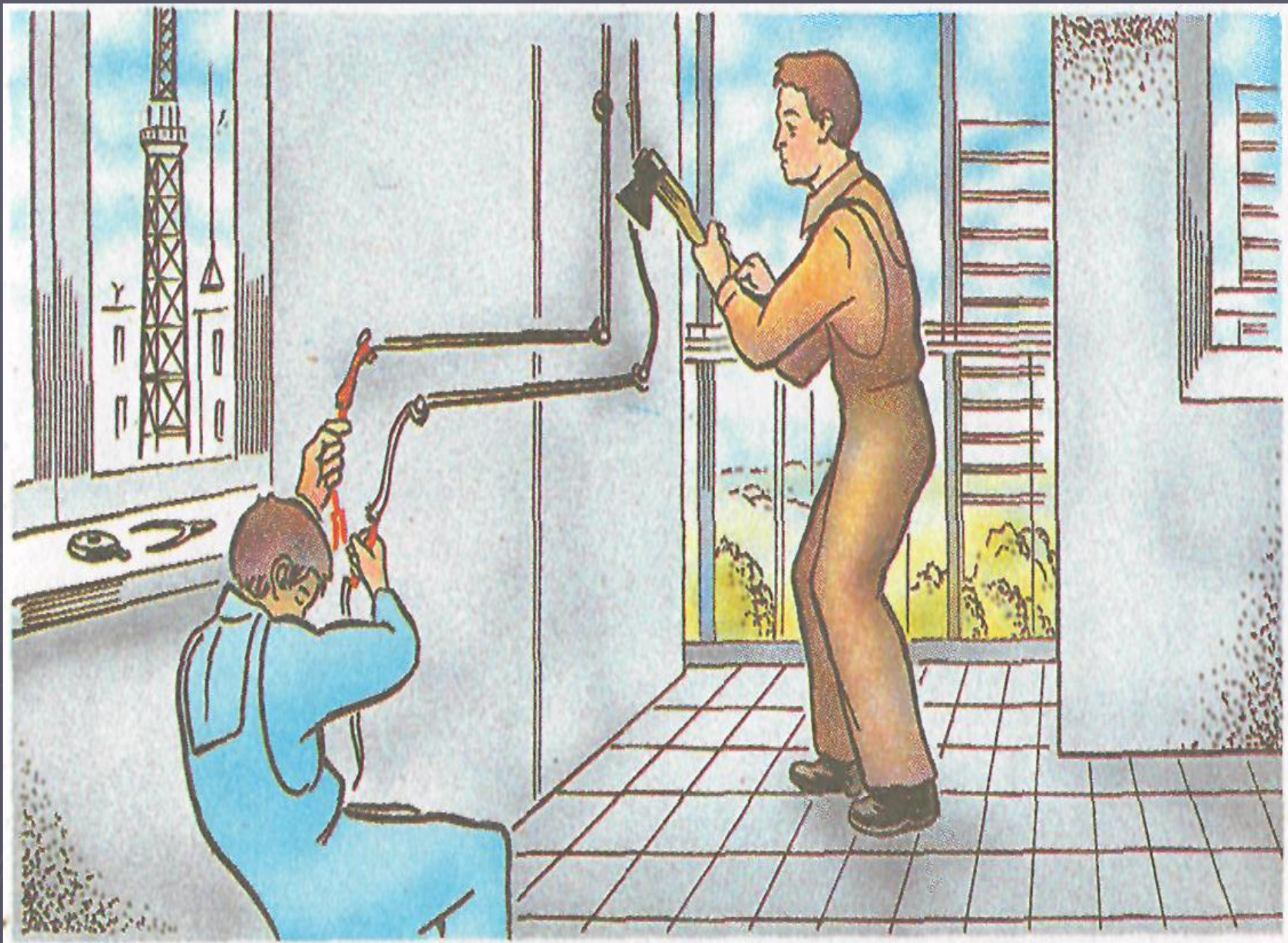


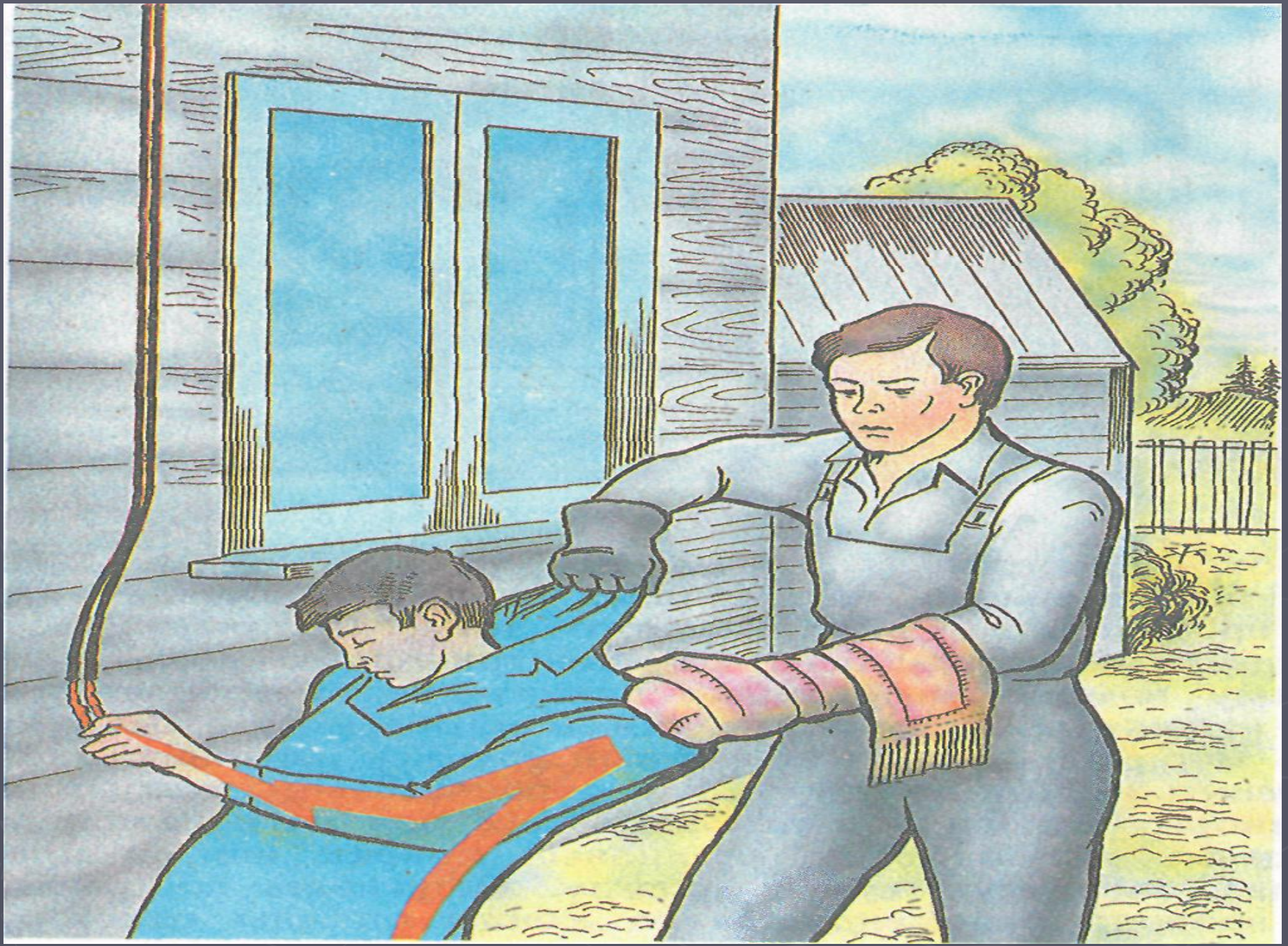


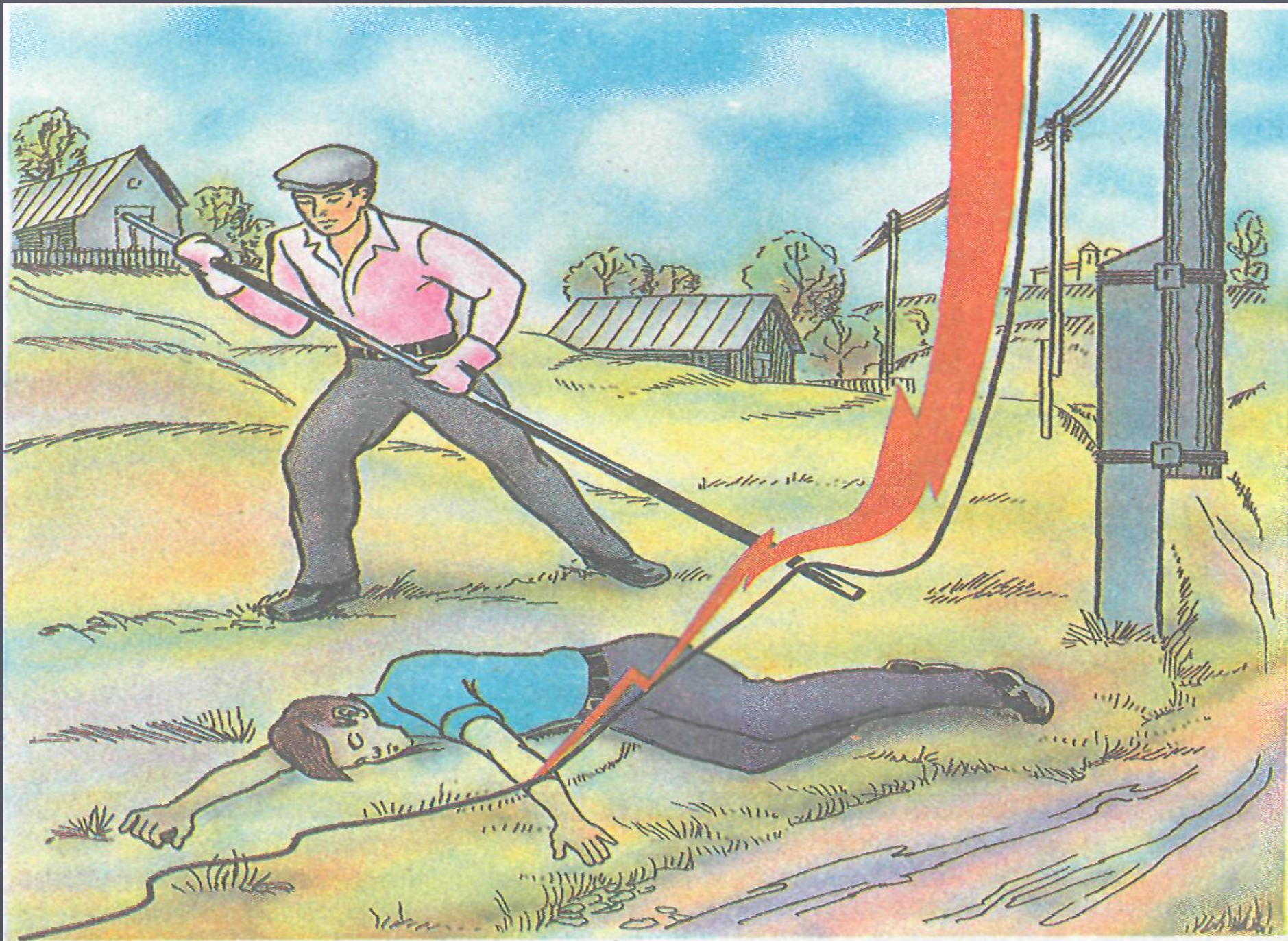


Одамларни ток таъсиридан қутқариш усуллари.









Ток таъсирига тушганларга бирламчи ёрдам бериш қоидаси.

