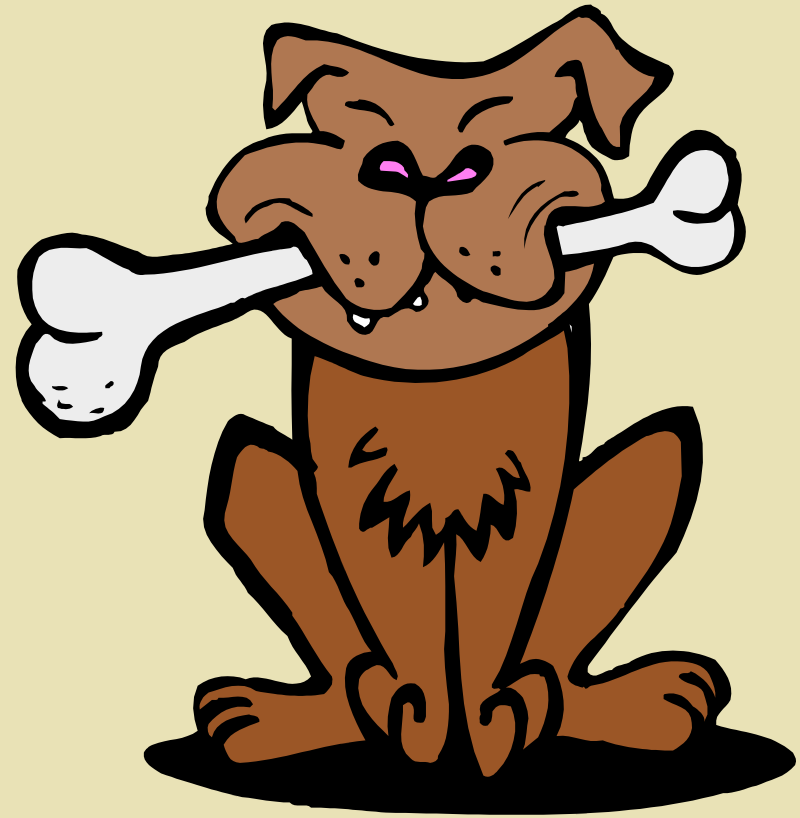


Traditions and Customs in Great Britain



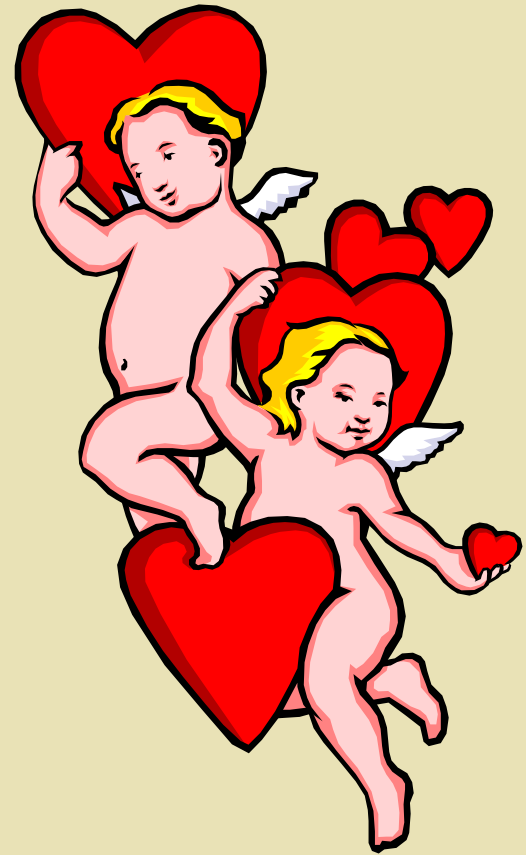
Crufts Dog Show

- ◆ In February.
- ◆ Valuable dogs from all over the world compete in Birmingham.
- ◆ The best dog gets the title Crufts Supreme Champion.



Saint Valentine's Day

- ◆ February 14
- ◆ Was started in the time of Roman Empire.
- ◆ Is dedicated to St. Valentine.
- ◆ People send a card to someone they love, like, fancy or admire.



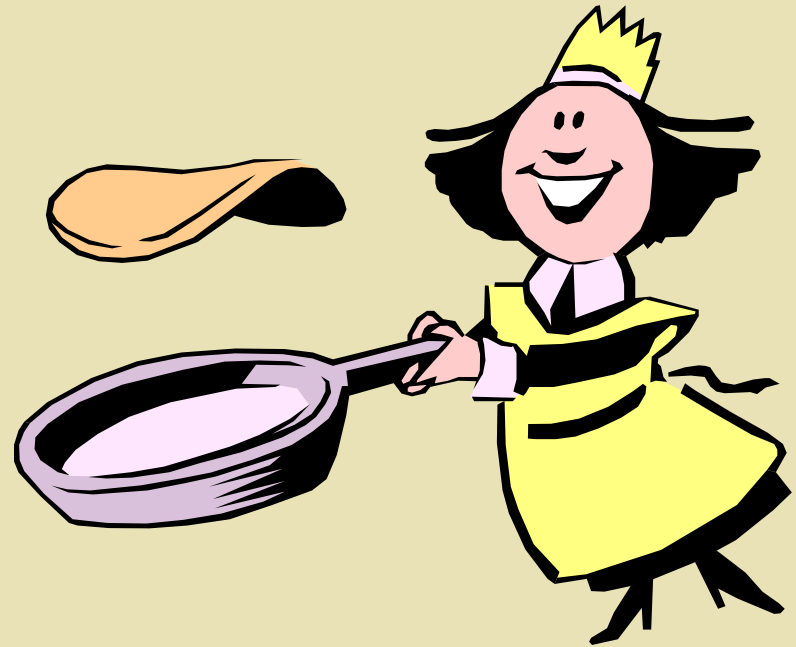
The Boat Race

- ◆ In March
- ◆ A rowing race between the universities of Oxford and Cambridge.
- ◆ On the river Thames in London (7,2 km).



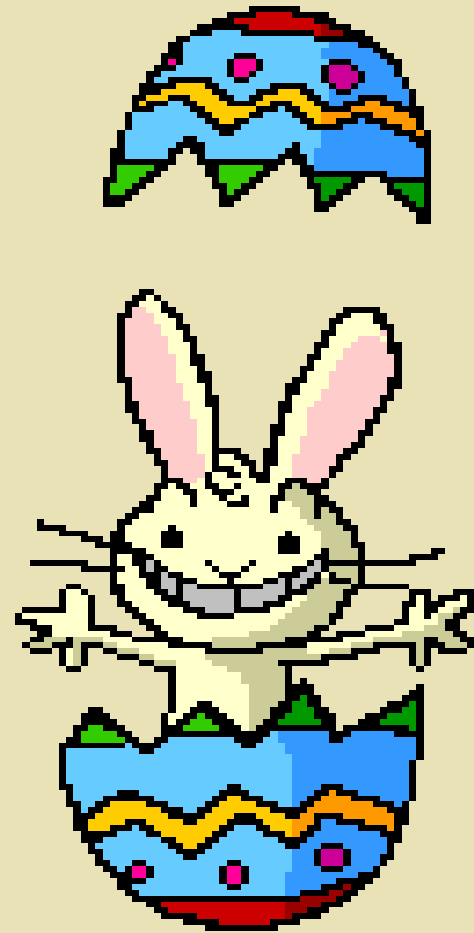
Pancake Day

- ◆ In March
- ◆ The last day before Lent.
- ◆ Pancake race-running while holding a pancake in a frying pan. Competitors have to throw it in the air and catch it again in the pan.



Easter

- ◆ In April.
- ◆ The celebration of the Resurrection of Christ
- ◆ Schools are closed for two weeks.
- ◆ People give each other chocolate eggs that are wrapped in silver paper.



The London Marathon

- ◆ One of the biggest marathons in the world.
- ◆ Each year about 30,000 people start the race and about 25,000 finish.
- ◆ Raise money for charity.



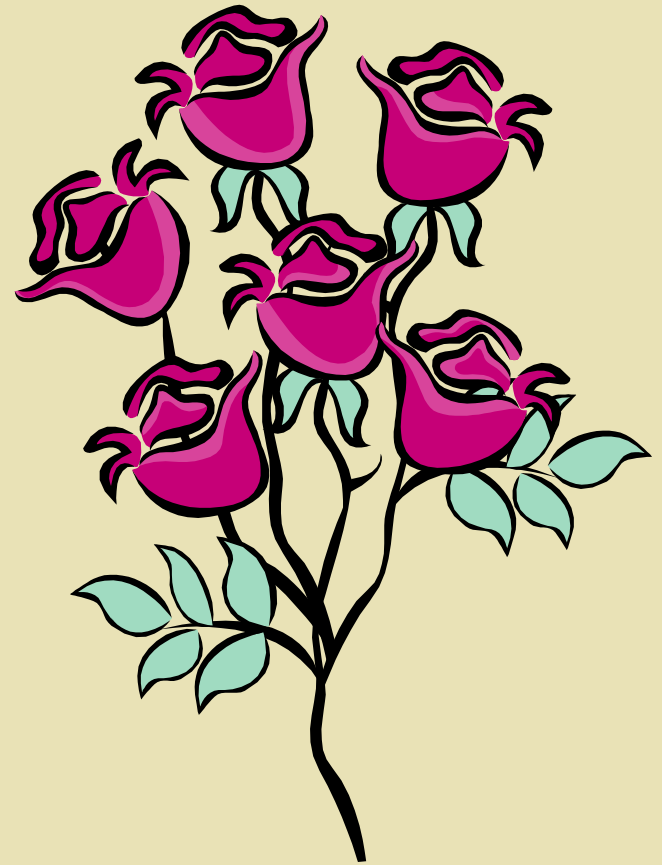
May Day

- ◆ May 1
- ◆ A pagan festival to celebrate the end of winter and welcome summer.
- ◆ Children dance around the maypole and sing songs.



Chelsea Flower Show

- ◆ In May
- ◆ Britain's most important flower and garden show.
- ◆ Thousands of people come to see the prize flowers and specially built gardens.



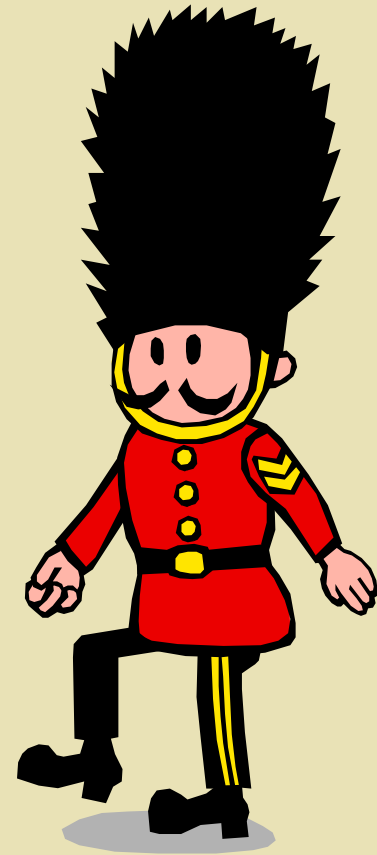
Midsummer Day

- ◆ June 24
- ◆ Summer solstice.
- ◆ People stay up until midnight to welcome in midsummer day.
- ◆ When the fires die down, men run or jump through it to bring good luck.



Trooping The Colour

- ◆ The second Saturday in June.
- ◆ Celebrates the Queen's official birthday.
- ◆ Lots of marching, military music and the soldiers are dressed in colourful uniforms.



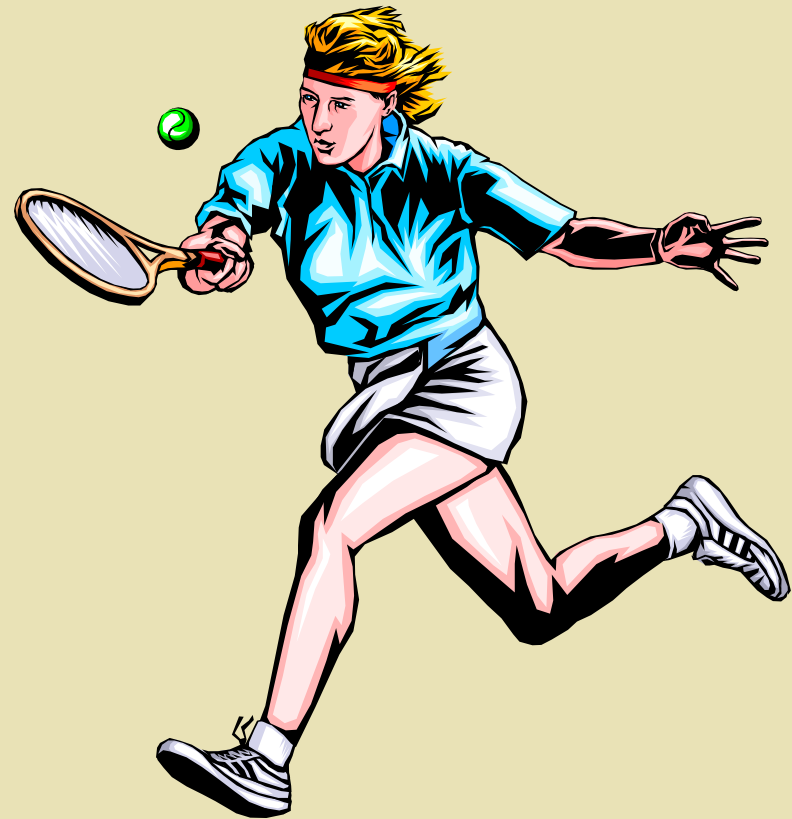
Saint Swithin's Day

- ◆ July 15
- ◆ Saint Swithin was England's Bishop of Winchester.
- ◆ 40 days of bad weather will follow if it rains on this day.



Wimbledon

- ◆ The last week of July and the first week of June.
- ◆ At Wimbledon in South-West London.
- ◆ One of the four great world tennis championships and the only one which is played on grass.



Notting Hill Carnival

- ◆ The last weekend in August.
- ◆ Takes place in Notting Hill.
- ◆ People dress up in fabulous costumes.
- ◆ Steel bands play African and Caribbean music.



Halloween

- ◆ October 31
- ◆ A pagan festival celebrates the return of the souls that visit their former houses.
- ◆ People dress up as witches, ghosts etc.
- ◆ Houses are decorated with pumpkins.



Guy Fawke's Night

- ◆ November 5
- ◆ He was a terrorist.
- ◆ The day marks the discovery of a plot to blow up Parliament in 1605.
- ◆ People make models of him and burn them on big bonfires.



Christmas Day

- ◆ December 25
- ◆ Religious ceremony commemorating the birth of Christ.
- ◆ Children wake up early to find presents in their stockings.
- ◆ Traditional Christmas tree and dinner.



Boxing Day

- ◆ December 26
- ◆ It is usually spent in front of the TV, recovering from Christmas Day.
- ◆ Servants go from house to house with collecting boxes.



New Year's Eve

- ◆ December 31
- ◆ Traditionally Scottish celebration.
- ◆ At midnight everybody joins hands and sings Auld Lang Syne.

