

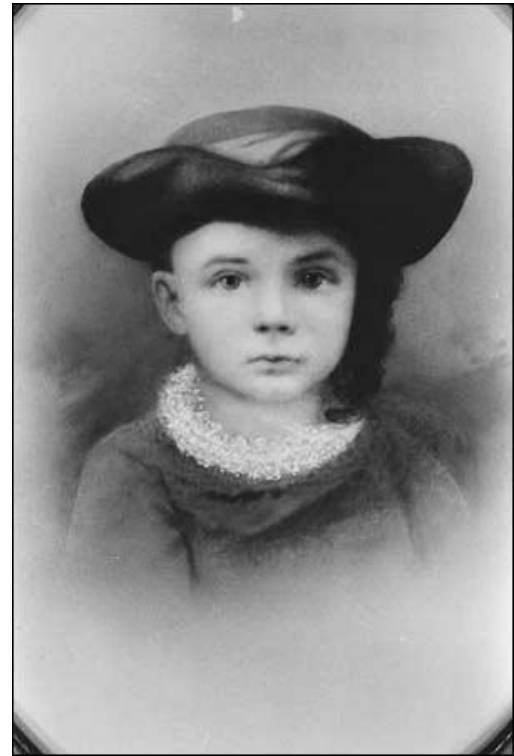
# Henry Ford



By Tyler Pirtle

# Early Life

- Henry Ford was born on July 30<sup>th</sup>, 1863, on his parents farm in what is now Dearborn, Michigan.
- At a young age, Ford showed an interest in mechanics and a Disinterest in farm life
- At age sixteen, ford left the family farm to go to the nearby city of Detroit to work as an apprentice mechanic.



# Business Experience



- Ford worked as an apprentice mechanic for three years.
- In 1891, Ford became an engineer with Edison Illuminating Company, in Detroit. After three years, Ford was promoted to chief engineer, which gave him enough time and money to focus on his personal interests.

# Ford Motors

- With the extra time and money Ford had from his promotion, he experimented on his own with building engines.
- In 1896, Ford came up with his first self powered transporter, the Quadricycle.



- After a couple of unsuccessful jobs in car manufacturing companies, Ford created the Ford Motor Company in 1903.
- Henry Ford was the vice-president and chief engineer of Ford Motor Company.
- A few months after being founded, the company sold its first vehicle, the Ford Model A.



# Model T



- In 1908, Ford Motor Company came out with the famous Model T.
- The Model T was affordable, reliable, and efficient.
- By the end of its production, over 15 million Model T's were sold.

# Workplace

- Along with the invention of his automobiles, Ford was also responsible for the largest work complex and moving assembly line.
- The plant was located on the banks of the Rouge River in Dearborn.

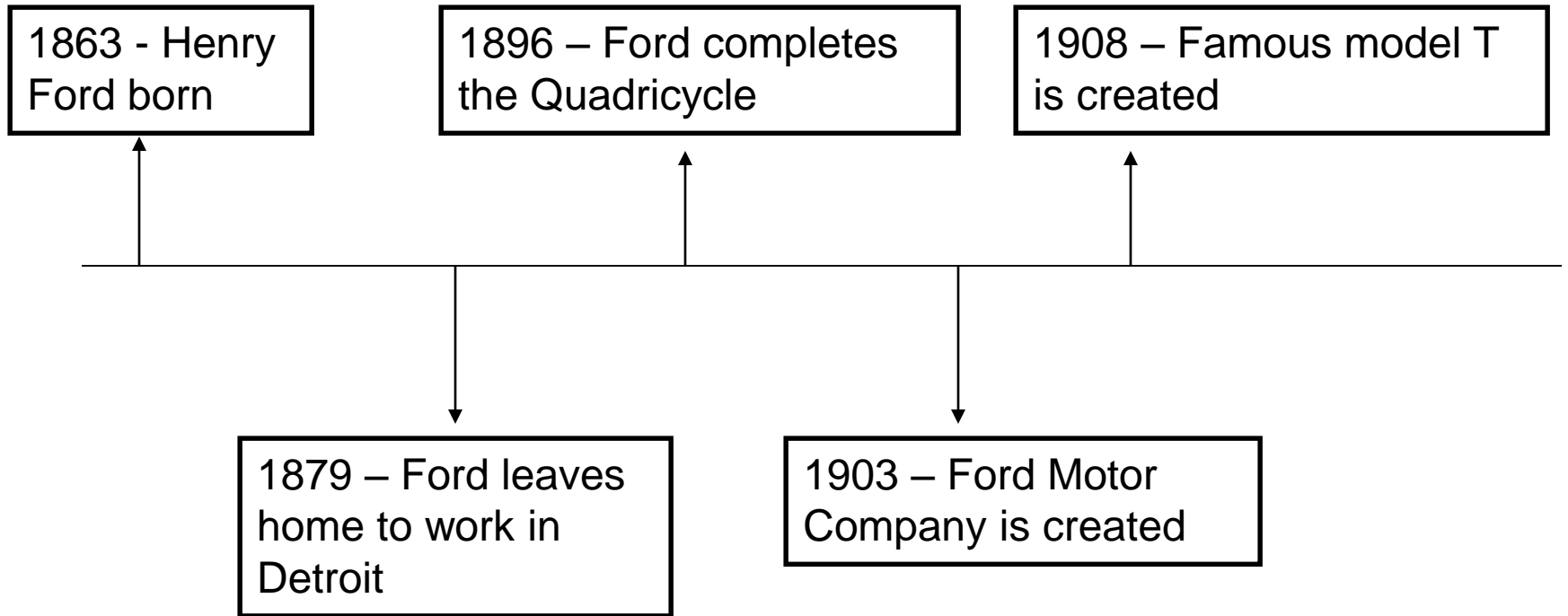


# End of the Road

- In 1938, Henry Ford suffered a heart attack and handed the company over to his son.
- In 1943, the death of his son brought Henry Ford out of retirement. In bad health, Ford ran the company for another two years before making his grandson, Henry Ford II, the president of the company and retiring.
- Ford passed away in 1947 in his home in Dearborn, Michigan.



# Timeline



# PREPARED BY:

Dilafruz Madalieva

