

**O'ZBEKISTON RESPUBLIKASI
OLIV TA'LIM FAN VA INNOVATSIYALAR VAZIRLIGI**

**TOSHKENT IRRIGATSIYA VA QISHLOQ XO'JALIGINI
MEXANIZATSIYALASH MUHANDISLARI INSTITUTI" MILLIY TADQIQOT
UNIVERSITETI**

**“Gidrotexnika qurilishi” fakulteti
“Muhandislik grafikasi va dizayn nazariyasi” kafedrası**

Mavzu: Rezba parametrlari va turlari, chizmada tasvirlash

Ma'ruzachi, PhD

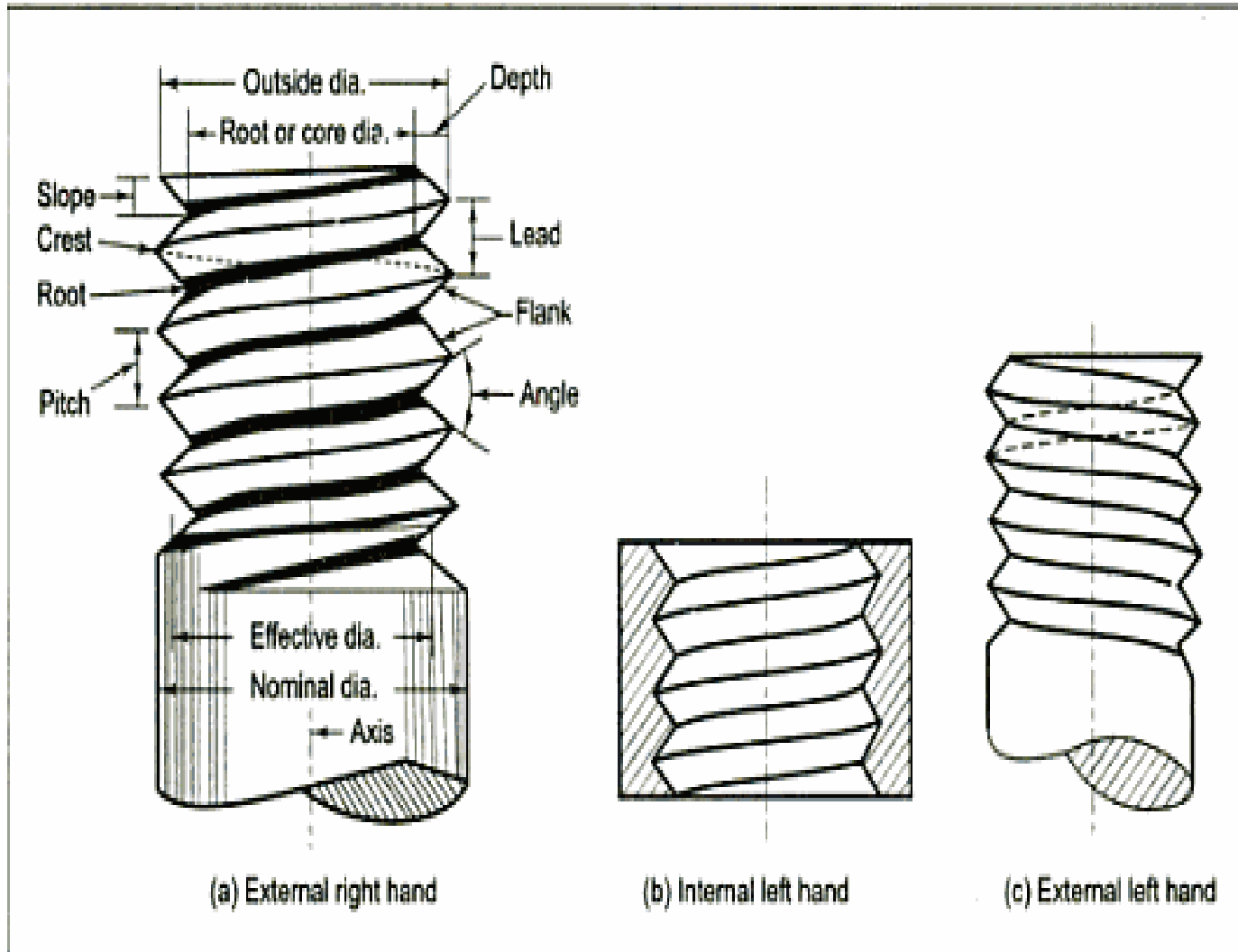
J.A.Qosimov

Rezba parametrlari va turlari, chizmada tasvirlash.

Mashinasozlikda rezbali birikmalar keng tarqalgan bo'lib, o'zining universalligi, yuqori mustahkamligi, katta yuklanishlarga chidamliligi bilan munosib o'rin olgan.

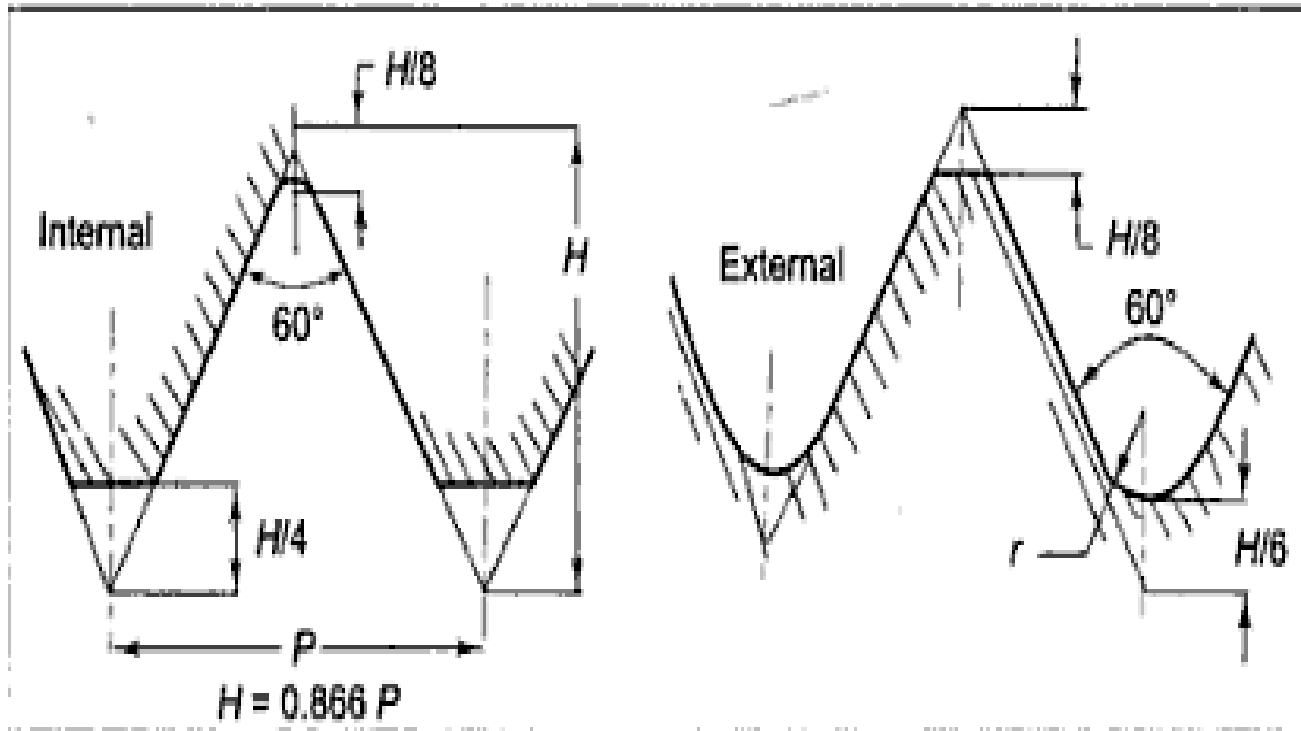
Rezbalar yordamida detallar bir-biri bilan mustahkam biriktiriladi va osongina ajraydi. Yoki maxsus detallar yordamida (bolt, vint, shpilka kabilar) biriktiriladi va ajratiladi.

Vintli rezba



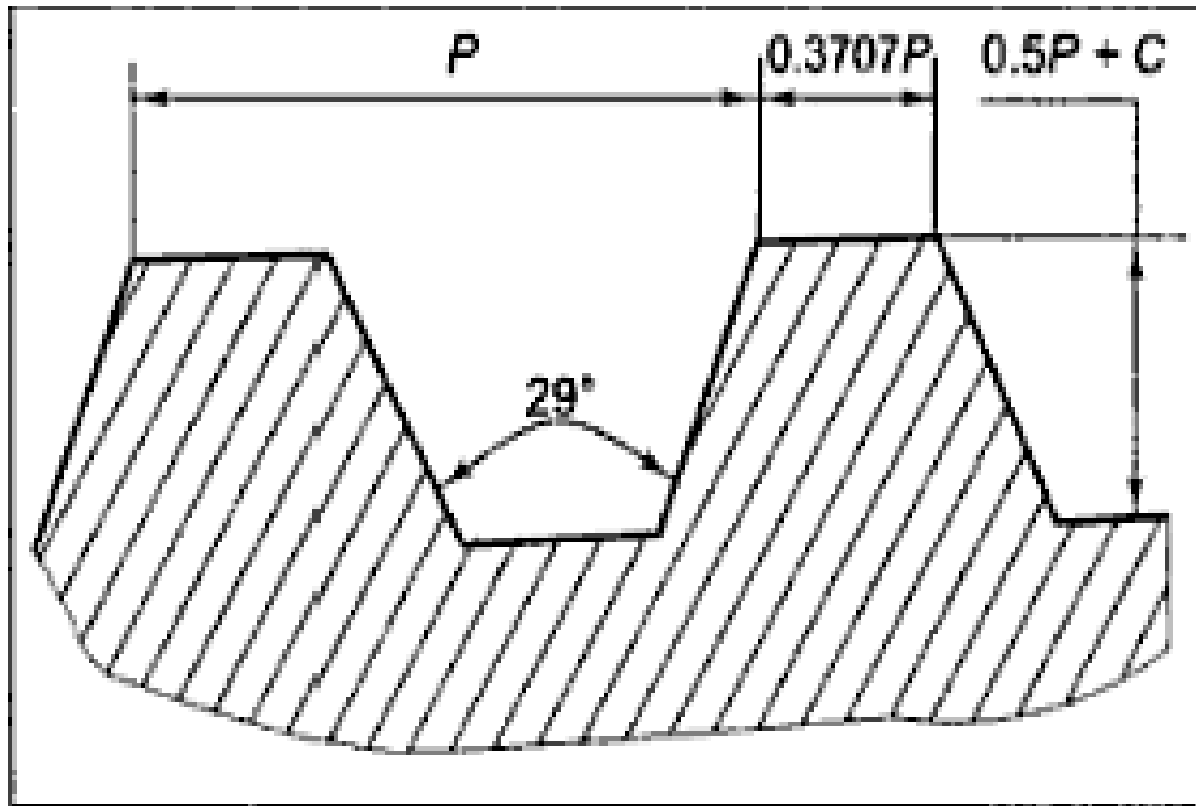
Rezba formaları

Uchburchak formfli



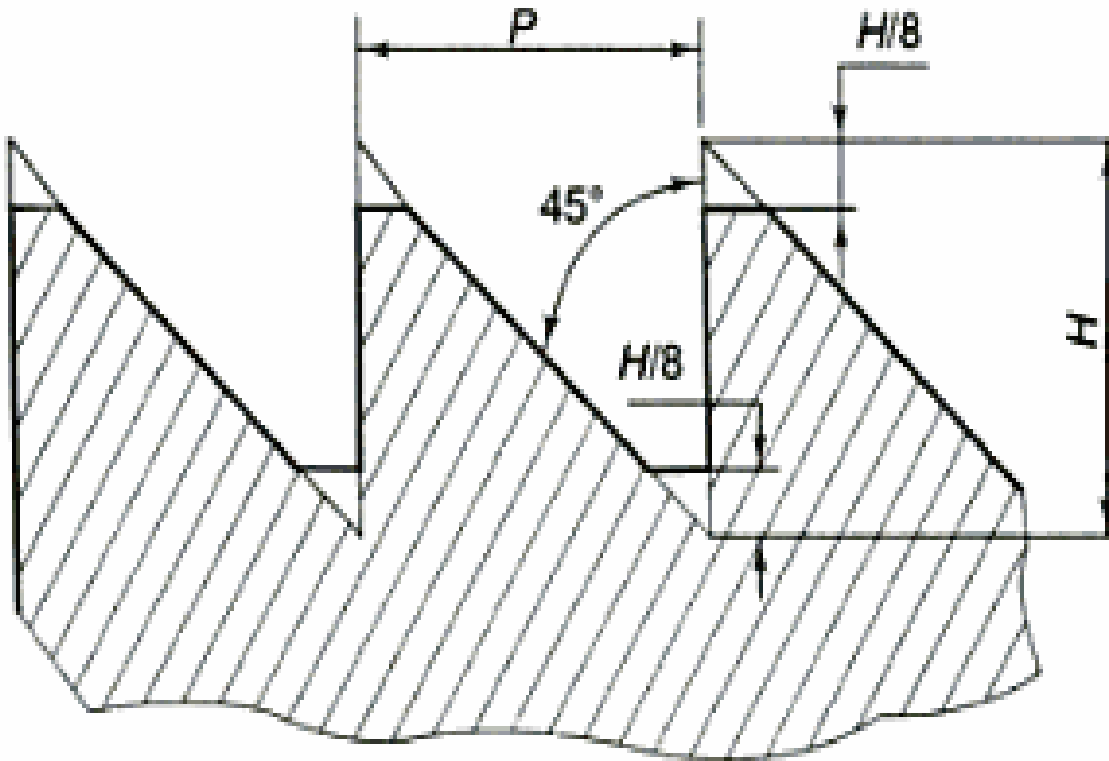
Rezba formalari

Trapesiya formali



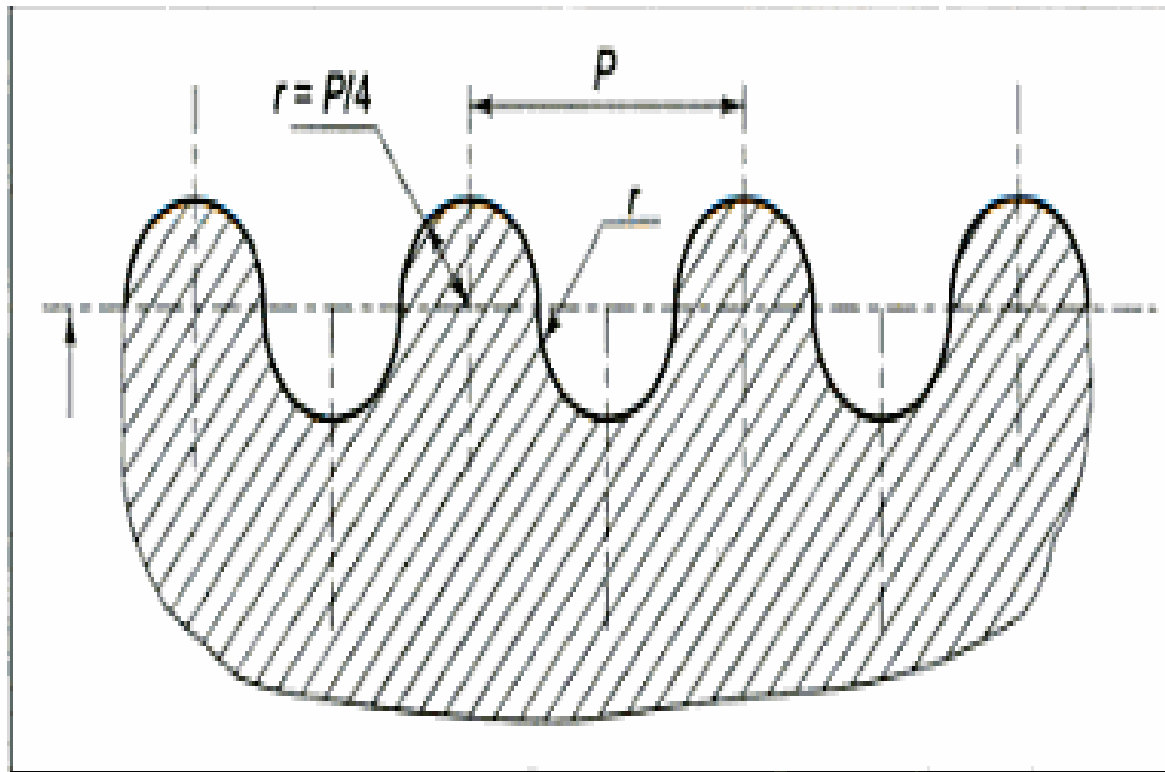
Rezba formalari

Arrasimon formalari

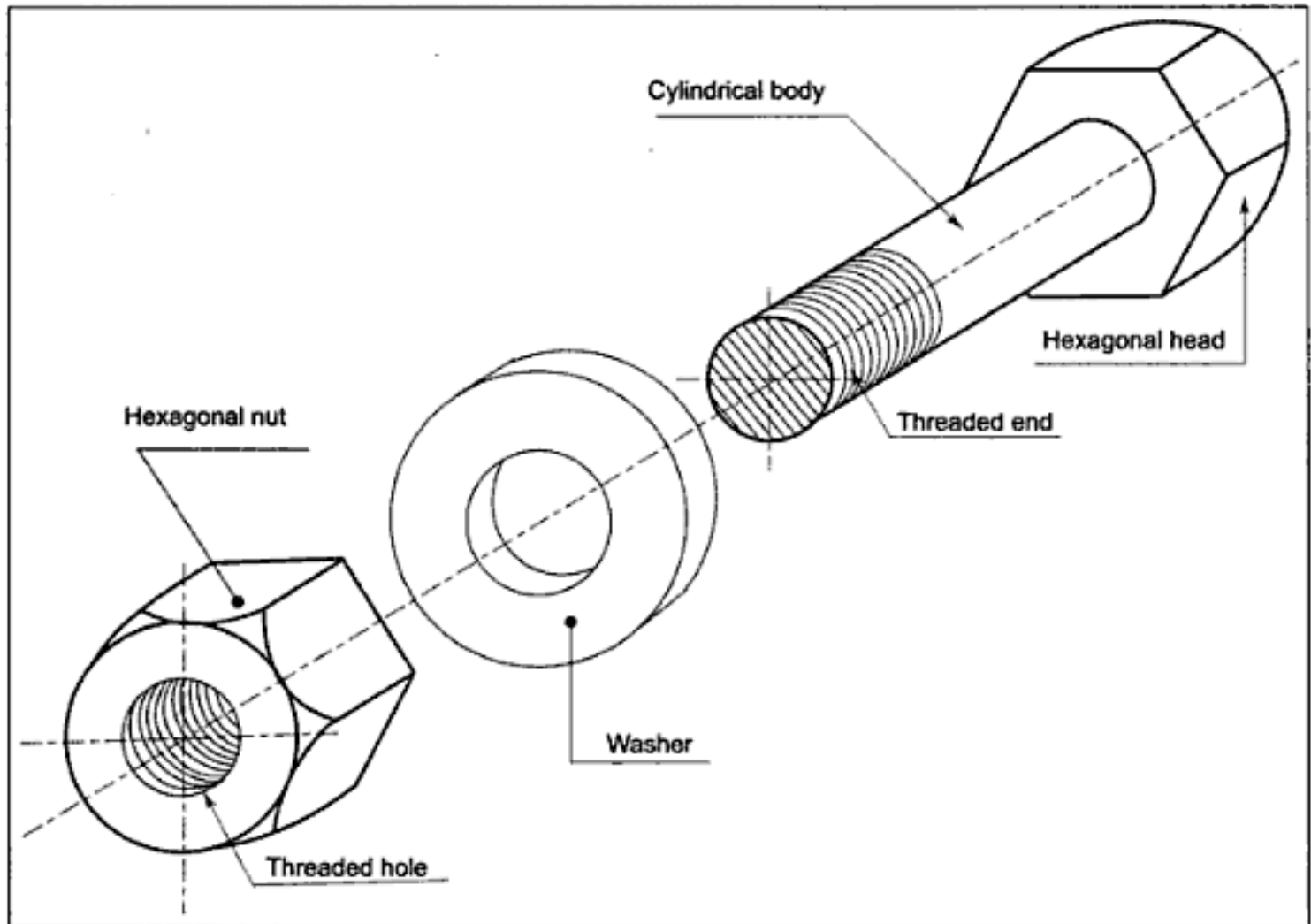


Rezba formaları

Muchtsimon formali



Boltli birlikma yigma chizmasi



Kvadrat gaykalar

Kvadrat gayka formalari

