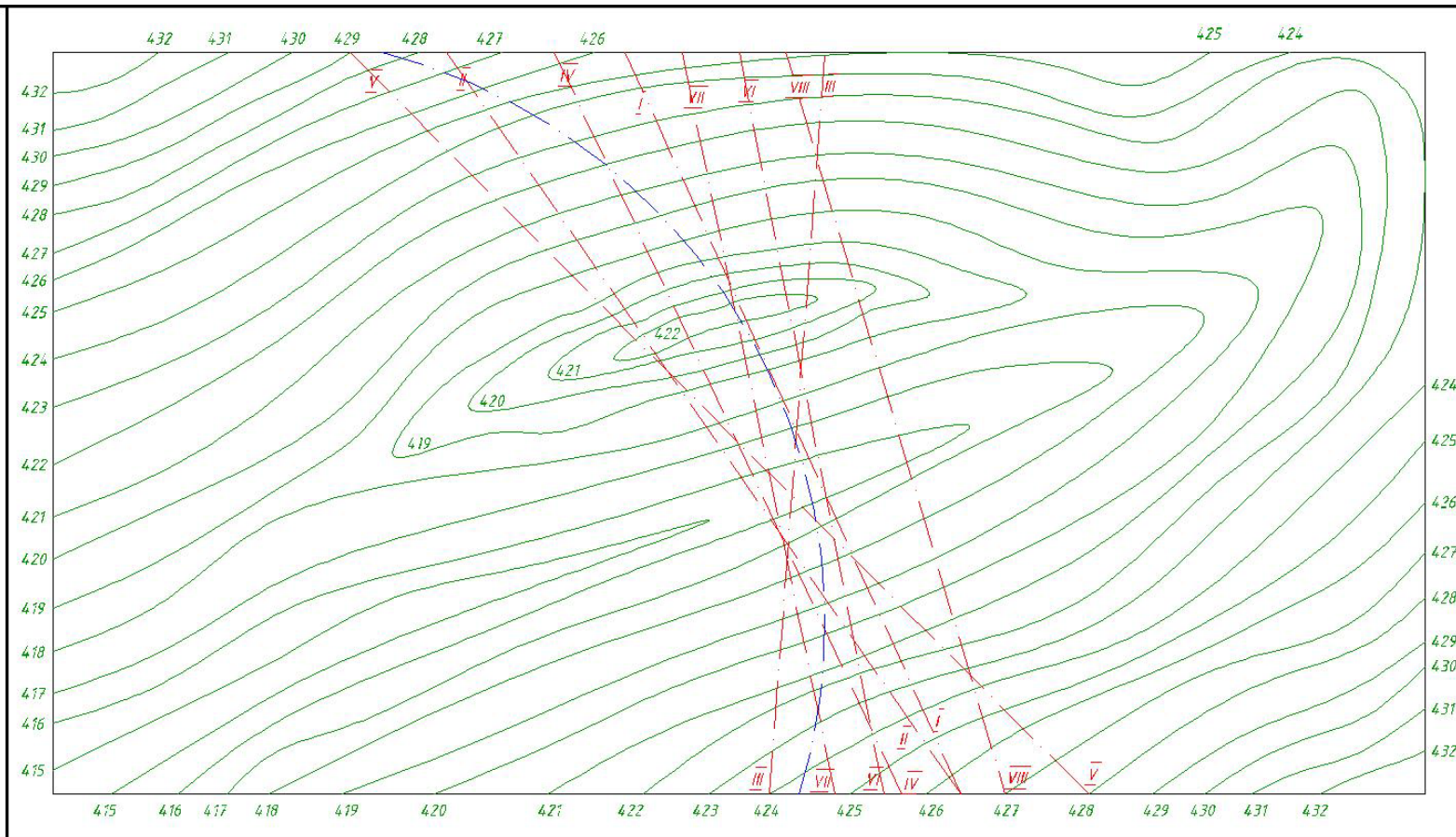


YOYSIMON DAMBA CHIZMASINI BAJARISH

Urishev Adhamjon Ergashaliyevish

Variant tanlanadi



- A-damba o'qi
- B-damba yuqorisining kengligi
- C-damba yuqorisining balandligi
- D-yuqori yonbag'ir tekisligining qiyaligi
- E-quyi yonbag'ir tekisligining qiyaligi

Nº	A	B	C	D	E	Nº	A	B	C	D	E	Nº	A	B	C	D	E
1	I	5	4,26	1,5	2,5	11	VI	4	4,27	1,5	2,0	21	VI	4	4,27	1,5	3,0
2	II	3	4,25	2,0	3,0	12	IV	5	4,26	1,25	2,5	22	VII	3	4,25	2,0	3,0
3	I	4	4,27	1,0	2,0	13	VI	3	4,26	2,0	2,5	23	I	5	4,25	1,5	2,5
4	III	6	4,25	2,0	2,5	14	VII	6	4,27	1,5	3	24	IV	6	4,27	1,5	2,0
5	II	3	4,26	1,25	3	15	V	4	4,25	1,5	2,5	25	III	3	4,25	2,0	2,5
6	VII	5	4,27	1,25	2,0	16	I	5	4,27	1,0	2,5	26	II	5	4,27	1,0	1,5
7	III	4	4,26	1,0	2,3	17	VII	4	4,26	1,5	2,0	27	II	4	4,26	1,5	2,5
8	VII	6	4,27	1,5	2,0	18	VIII	6	4,25	2,0	2,5	28	VII	3	4,27	1,5	2,5
9	IV	5	4,26	2,0	3,0	19	II	3	4,27	1,5	3,0	29	I	5	4,26	2,0	3,0
10	V	3	4,26	1,5	2,5	20	VIII	5	4,26	1,0	3,0	30	IV	6	4,26	2,0	2,5

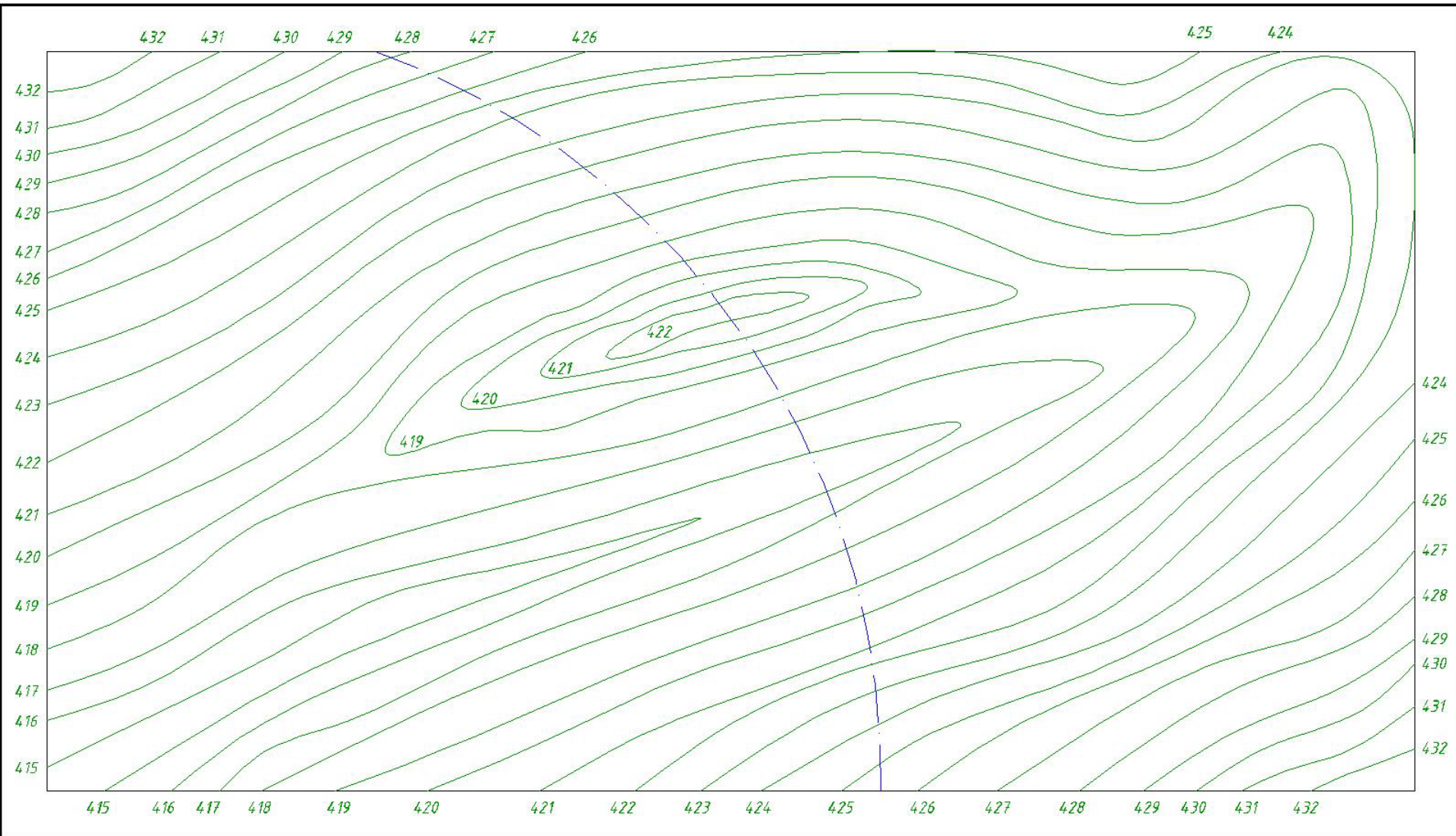
Uzq	Varaq	Xujjat	Imzo	Sana
Chizdi:	Ochilova M			
Tekshirdi:	Urishev A			

**GIDROTEXNIK
DAMBA**

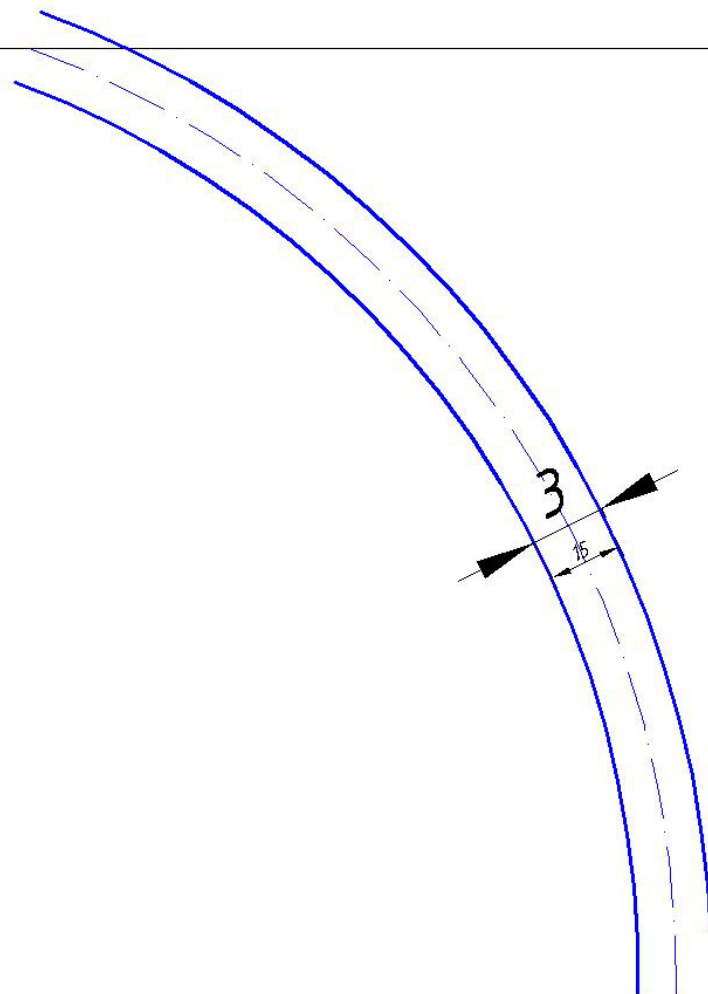
"ChG va MG" kafedrası

Lifera	Massa	Masshtab
		1:200
Varaq	Varaqlar	
	GTIQvaUF 1/8	

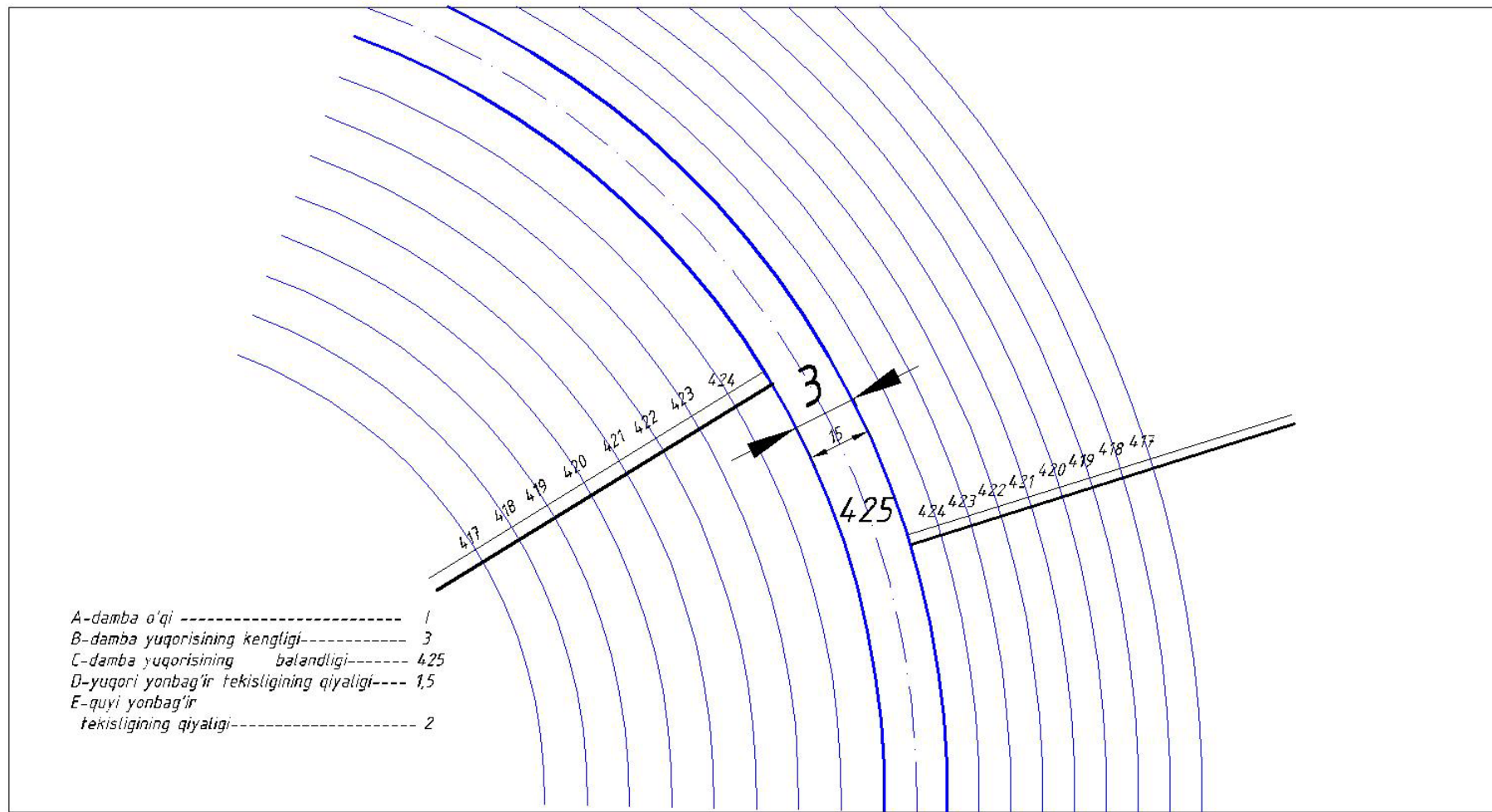
Yer gorizontallari chizilib, damba o'qi o'tkaziladi,



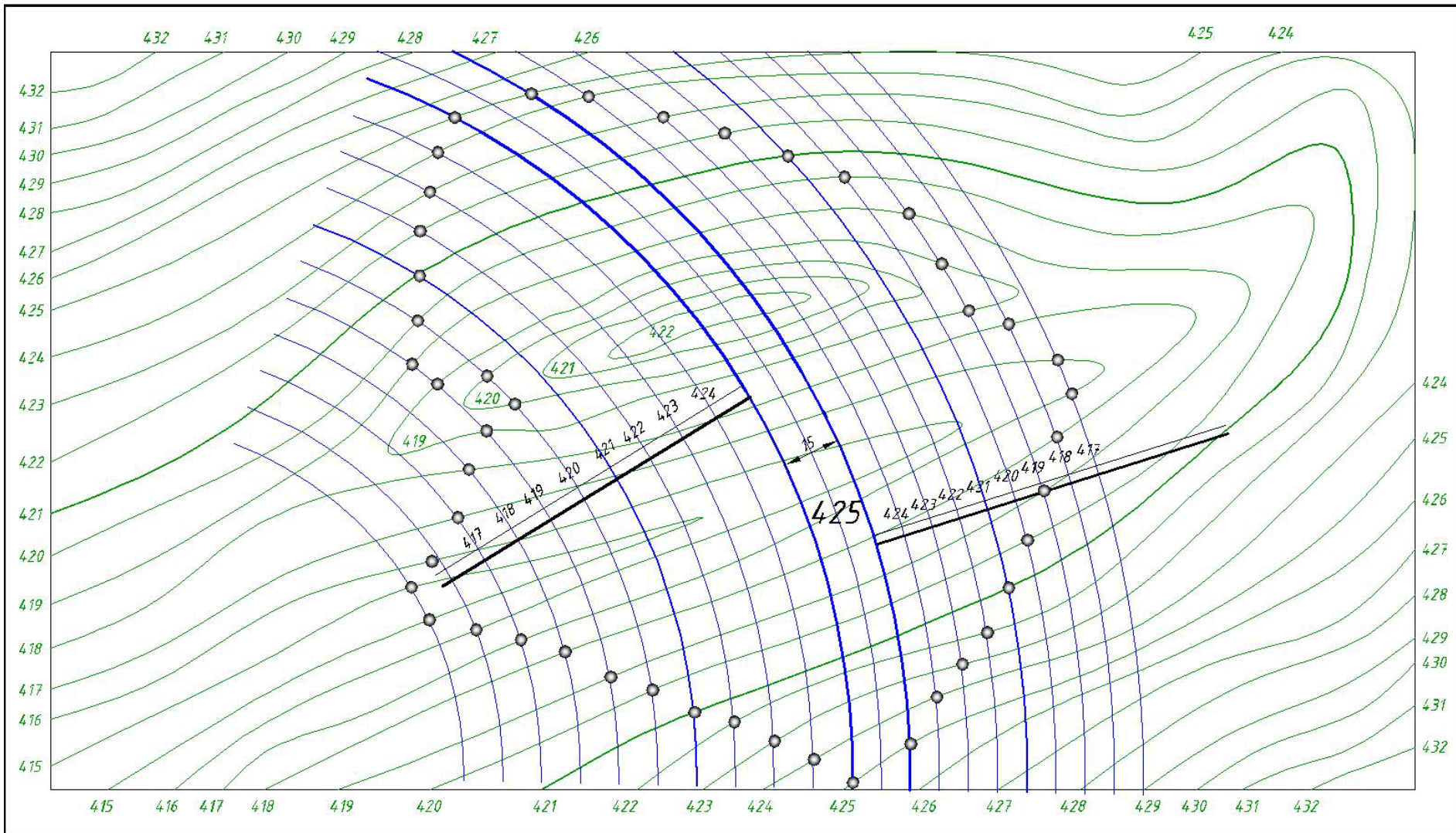
Masshtabga asosan damba yuqorisining chiziqlari o'tkaziladi.



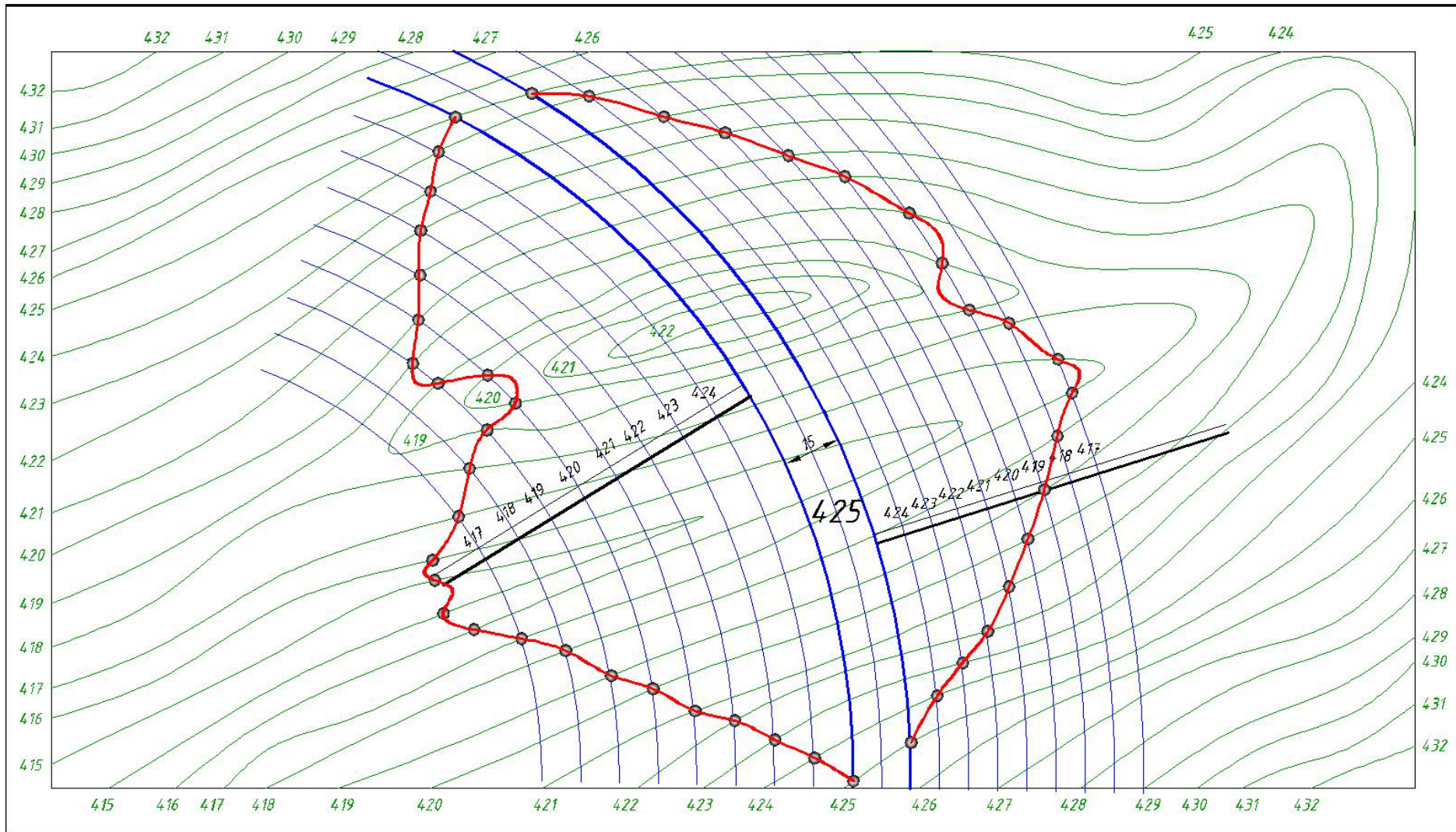
Ko'rsatilgan qiyalikka asosan yonbag'ir sirlari gorizontallari o'tkaziladi.



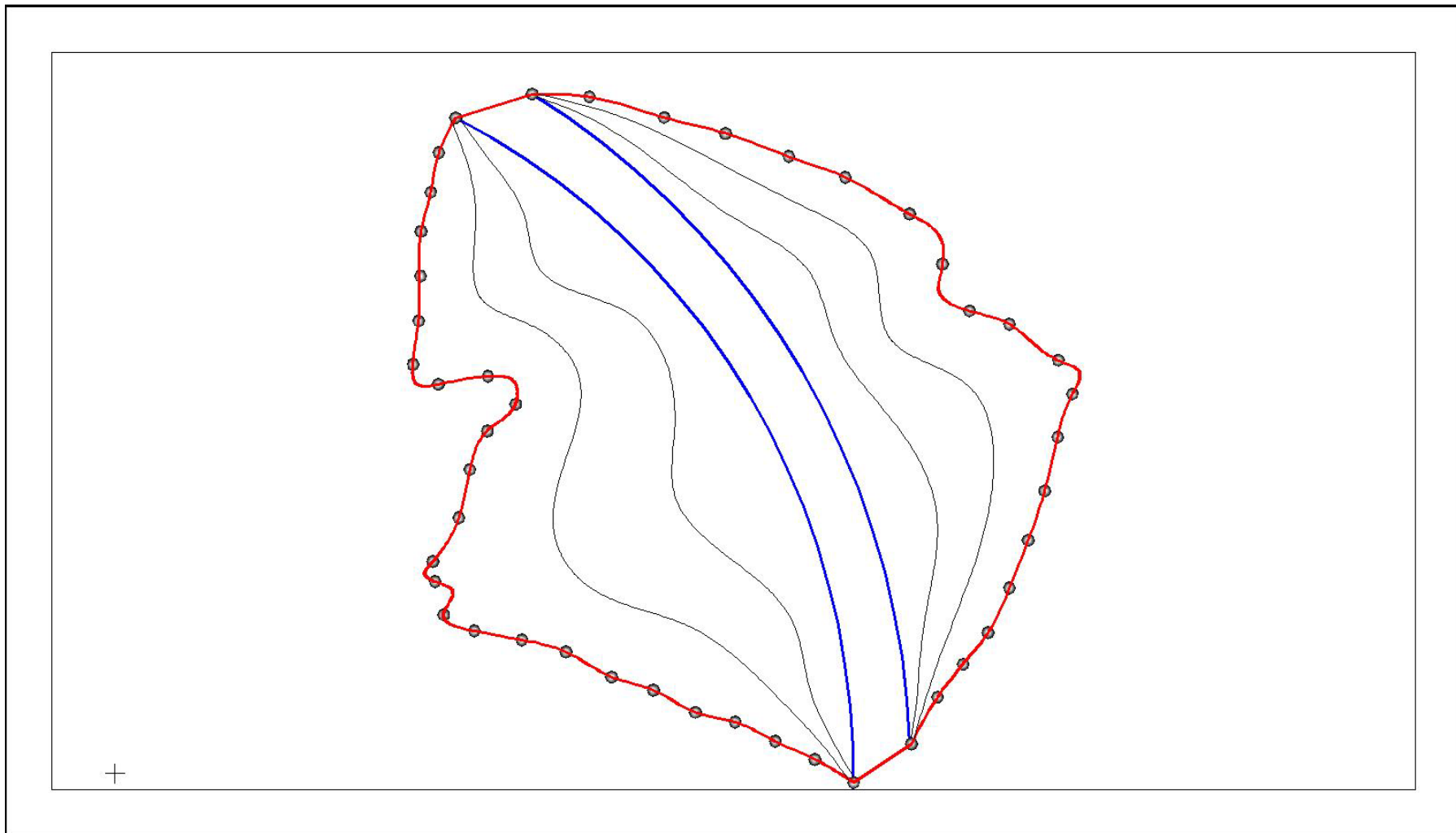
Yer va damba yonbag'ir tekisliklarining o'zaro kesishuv nuqtalari topiladi (Bir xil balandlikdagi gorizontallarning kesishuv nuqtalari).



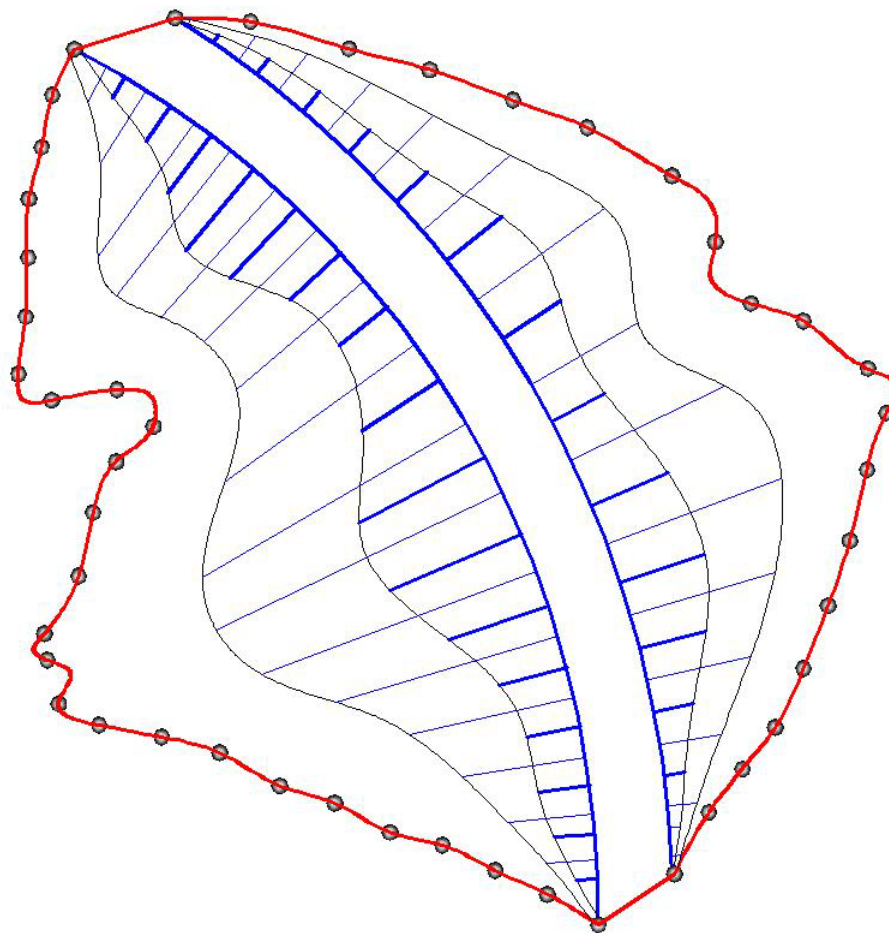
Topilgan nuqtalar o'zaro tutashtiriladi.



Bergshtrixlarni o'tkazish uchun shtrixlanadigan yuza ko'z chamalab uchga bo'linadi.



Yuqoridan quyiga qarab yo'naltirilgan holdabergshtrixlar o'tkaziladi.



+

Topgrafik sirtdagi dambaning ko'rinishi

