

Water Reservoir Area and Volume Determination Using Geoinformation Technologies and Remote Sensing

Khasanov Khojiakbar, Bakiev Masharif, Choriev Jamshid, Jahonov Aziz, Khalimbetov Azat

Abstract: This article presents the method for calculating the area and volume of the water reservoir using Remote Sensing and Geoinformation Technologies. All calculations were performed for the Tashtepa water reservoir which recommended for construction in the Tashkent region. The territory of Tashtepa water reservoir was explored using the Google Earth program, was identified the alignment for the construction of dams, and the file was saved as a KML (Keyhole Markup Language) format. The alignment and the digital elevation model of the reservoir area from the online database were uploaded to the Global Mapper program which one of the geographic information system programs. Contours were formed in the digital elevation model, there was defined the longitudinal profile of the alignment along dams, surface and volume of the water reservoir were obtained for each circuit and based on the results were obtained curve lines between contour and area $F=f(H)$, contour and volume $W=f(H)$.

Keywords: Tashtepa water reservoir, geographic information systems, remote sensing, Google Earth, Global Mapper v11.01, digital elevation model, contour, a transverse profile of line of the dam, area of the reservoir, the volume of reservoir.

I. INTRODUCTION

At the time of advanced hydrotechnical construction development in market economy conditions, it is important to obtain accurate information on geographical location of a certain site in a short time. Geoinformation System (GIS) originated in the 60s of the last century is becoming the integral part in many spheres of economy [1, 2, 3]. GIS are software products, operated with specialists-analysts, containing of collection, operation, analysis, modeling and imaging spatial geographical data, originated from connection of mathematics, informatics and geography, which are intended for creating, visualization and analysis of data, located on the Earth surface, for which gridding and interaction with spatial objects is important [4,5,6]. Remote Sensing (RS) is the observation of the Earth surface via land, aviation and space means, equipped with various types of camera gear. Wave lengths, accepted by camera

Revised Manuscript Received on November 15, 2019

Khasanov Khojiakbar, Researcher of Hydrotechnical structure and engineering construction department, Tashkent Institute of Irrigation and Agricultural Mechanization Engineers, Uzbekistan.

Bakiev Masharif, professor and head of Hydrotechnical structure and engineering construction department, Tashkent Institute of Irrigation and Agricultural Mechanization Engineers. Uzbekistan.

Choriev Jamshid, Hydrotechnical structure and engineering construction department, Tashkent Institute of Irrigation and Agricultural Mechanization Engineers, Uzbekistan.

Jahonov Aziz, Assistant of Hydrotechnical structure and engineering construction department, Tashkent Institute of Irrigation and Agricultural Mechanization Engineers, Uzbekistan.

Khalimbetov Azat, Assistant of Hydrotechnical structure and engineering construction department, Tashkent Institute of Irrigation and Agricultural Mechanization Engineers, Uzbekistan.

equipment, range from fractions of micrometer (visible optical radiation) to meters (radio waves). RS methods can be passive, i.e. use natural refraction or secondary heat radiation from the objects on the Earth surface, caused by solar activity, and active, which use forced radiation from objects, initiated by artificial source of directional operation [7, 8]. Digital model of the relief is the digital image of Earth elevation with respect to any coordinate system, the simplest form and digital characteristics of topographical surface, it can be used in determining detentions and uplands at any point of earth, creating 3D models of the earth surface, obtaining hydrological and geological analysis, surveying natural resources, managing agriculture [9, 10, 11, 12].

It is hard to imagine the effective operation of GIS without satellite research methods of our planet's regions. RS is based on the collection of information about the earth surface without practically contacting it; obtained data about the energy refracted from objects can be subsequently processed, analyzed and used in practice. Nowadays around the world GIS and RS is widely used in the sphere of water resource management and water use, including in obtaining hydrological, morphological and hydro meteorological data from world ocean, seas, lakes, rivers, water reservoirs and other water bodies in short period of time. Remote sensing can be used in determining a potential location for water reservoir construction, estimate its volume, modeling groundwater, determine possible erosion zones, mudflood risk and mudflood stable areas and etc. [13, 14, 15].

Global Mapper is one of GIS programs by innovational cartography software company Blue Marble Geographics. It is becoming popular among other GIS programs for its options to read more than 200 types of files and capability to enter global database, as well as for its simplicity and eligible program interface. Global Mapper has options for processing, editing, reprocessing and publishing topographical maps in 2D and 3D formats, including on the basis of raster images from satellites, digital relief models, vector data, obtained in GIS, as well as for its options for developing contours and site profiles, designing fill-in and cut-in volumes, and for capability to download GPS directly [16, 17].

II. METHODS

The research is conducted in Toshtepa water reservoir territory planned to build to improve water provision for Tashkent region.

In terms of Google Earth online software capabilities observations were held in the

Water Reservoir Area and Volume Determination Using Geoinformation Technologies and Remote Sensing

territory of Toshtepa water reservoir. Site topography was studied, optimal site was chosen for construction and dam location section was set using command Add Path. The dam location section was saved in KML format (Fig. 1).

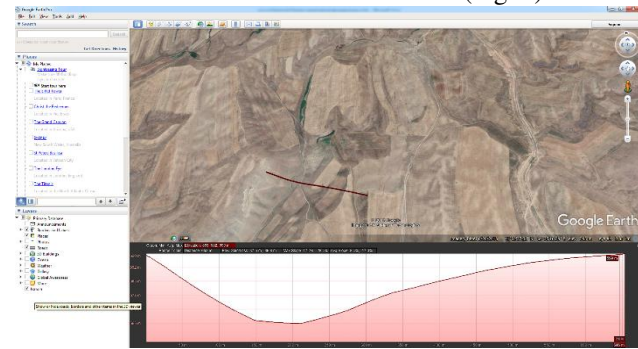


Fig. 1. Dam location section (Google Earth)

The dam location section (KML file) is loaded into the Global Mapper program, and using the command the Connect To Online Data command is downloaded Digital Model (SRTM) from the online database Shuttle radar topographic mission. (Fig. 2)

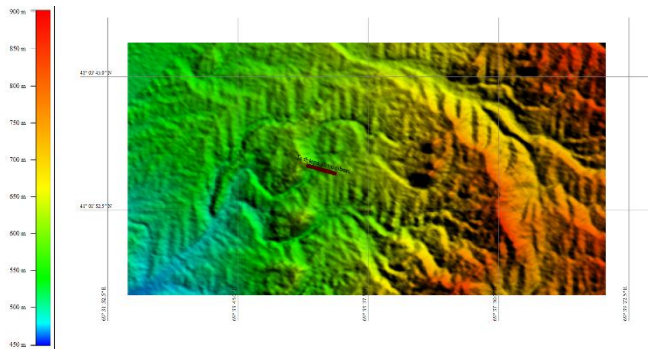


Fig. 2. Digital model of Toshtepa water reservoir territory relief. (Global Mapper)

In order to evaluate reservoir water surface area and volume Generate Contours command was used to generate contours for each meter rise. Surface area is generated for a specified elevation to determine reservoir surface area and volume. Toshtepa water reservoir maximal contour is 600. Edit Line Feature command is used to separate it from contours and generate a new contour. Surface area is generated from this contour and dam location section using Create New Area Features command from Selected Lines option (Fig. 3).

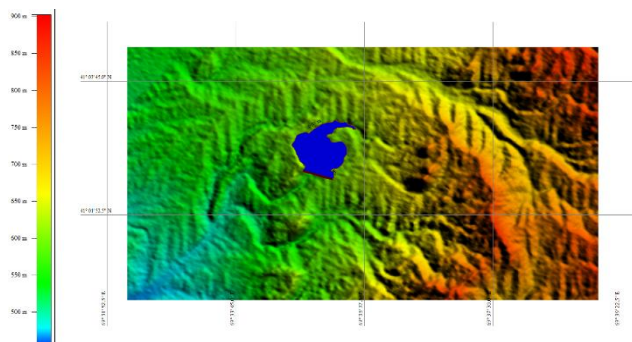


Fig. 3. Reservoir water surface area generated at contour 600

Dam location section (KML file) is saved in Global Mapper program and the site relief digital model obtained

using Shuttle Radar Topography Mission (SRTM) is downloaded from online database (Fig. 2).

Using water reservoir digital model, along with determining reservoir total water surface area and its volume, water areas and volumes for each contour was analyzed, sections to be closed with dams for maximal water storage were determined and cross sections were developed.

Having built dam location site cross section with 3D Path Profile command dam location section data such as dam length, mean height can be obtained from Show Path Details option in Option menu (Fig. 4).

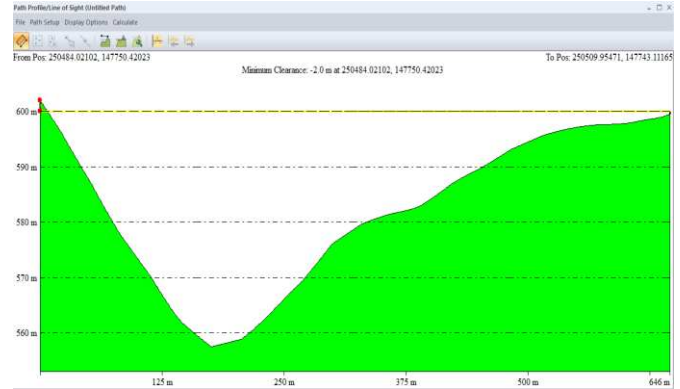


Fig. 4. The longitudinal profile along the bottom of the dam

III. RESULTS

After the area is generated for contour 600 Measure Volume (Cut-and-Fill) command is used to determine reservoir water surface area and volume for each contour. In Volume window we enter (598) in empty cell 1, of Use Same Base Height Value for All Vertices, choose Meters in cell 2, Above Sea Level in cell 3 and press OK. Volumetric Calculations window appear on screen, where we determine the generated contour 598 line (Fill Area, 0.924 km²) and water reservoir volume (Fill Volume, 12337510 m³) at 597 m above sea level. We analyse reservoir water surface area and volume for each meter elevation. The area and volume is determined for each contour (contours 557-598). These areas and volumes are inserted in MS Excel table (Table-I).

Table-I. Areas and volumes by contours for Toshtepa water reservoir

Contour (H) (sea level) m	Area (F) km ²	Volume (W) bln. m ³
557	0	0
558	0.000781	0.026812
559	0.002342	0.196205
560	0.00361	0.004976
561	0.00517	0.00944
562	0.00751	0.015704
563	0.01186	0.024869
564	0.01864	0.040176
565	0.02439	0.061607
566	0.02956	0.088609
567	0.0363	0.121277
568	0.0464	0.162596
569	0.0571	0.214208
570	0.0705	0.277781
571	0.0853	0.355802
572	0.1016	0.448726

573	0.1174	0.557915
574	0.1417	0.686713
575	0.1646	0.839868
576	0.185	1.014471
577	0.2049	1.209328
578	0.2267	1.424556
579	0.2536	1.665705
580	0.2845	1.935255
581	0.3146	2.234517
582	0.3437	2.56385
583	0.3742	2.922652
584	0.4057	3.312621
585	0.4347	3.732789
586	0.4666	4.183078
587	0.4993	4.665791
588	0.528	5.179462
589	0.563	5.724822
590	0.596	6.3034
591	0.634	6.918127
592	0.675	7.572868
593	0.713	8.267095
594	0.753	9.000304
595	0.793	9.773073
596	0.832	10.585
597	0.875	11.43874
598	0.924	12.33751

Based on the results obtained, contour and area $F=f(H)$, contour and volume $W=f(H)$ curves were developed (Fig. 5 and 6).

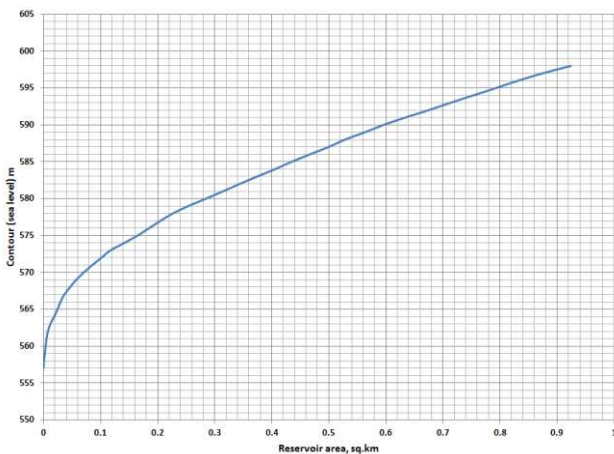


Fig. 5. Contour vs area curve line

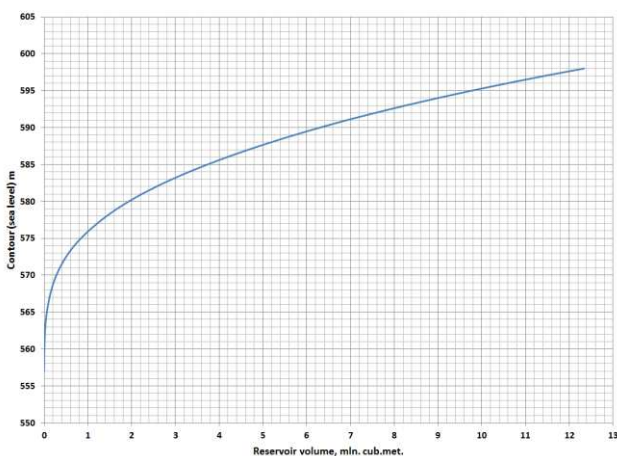


Fig. 6. Contour vs volume curve

IV. DISCUSSION

GIS and RS is being used widely in managing and using

water resources around the world, as well as in obtaining hydrological, morphological and hydrometeorological data on the world ocean, seas, lakes, rivers, water reservoirs and other water bodies remotely and in short period of time.

Blue Marble Geographics innovation cartography Software Company's Global Mapper is one of the GIS software programs. It has many capabilities such as getting into global database, opportunity to download over 300 shape files like ESRI, KML, LiDAR, MrSID, SRTM, obtain necessary data from global database and determine distance and area from these data, measure depths and height, develop contours and cross section profiles of the area, measure volumes (fill-in and cut-in), develop formation of basin channels, see simulation of water level change in the area, use Lidar Module functions, export data in more format types than other GIS software programs and others.

Within this research the software options were used to determine water surface area and volume of Toshtepa water reservoir and to analyse areas and volumes by contours, to develop dam location site profile.

The research work will be useful to study the site relief, measure depths and heights, determine distances and areas, water detention capability, set dam location site and develop its profile, determine water reservoir surface areas and volumes by contours within short period of time.

REFERENCES

1. Muxtorov U.Kh., Inomov A.N., Islomov U.P., Geographic information systems and technologies, Tashkent, 2017, 202 p.
2. Boltayev T.Kh., Akbarov O.M., Basics of geographic information system, Tashkent, 2010, 158 p.
3. Safarov E.Yu., Musaev I.M. and Abdurahimov H.A., Basics of geoinformation system. Tashkent, 2008, p 150.
4. A.V.Skvorstov, Geoinformation, Tomsk, 2006, 336p.
5. Shipulin V.D. Main principles of geoinformation systems. 2010. pp 29-40
6. Kovin R.B. and Markov N.G., Geoinformation systems, 2008, pp 10-13
7. Habarov D.A., Adiev T.S., Popova O.O., Chugunov V.A. and Kojevnikov V.A., Analysis of modern technologies of Earth remote sensing, Moscow economical journal No1 Moscow, 2019,
8. A Canada Center for Remote Sensing Fundamentals of Remote Sensing Remote Sensing Tutorial, Canada, 2013, p 258
9. Bolstad P.V. and Stowe T., An Evaluation of DEM Accuracy: Elevation, Slope and Aspect, Photogrammetric Engineering and Remote Sensing The Fundamentals of Digital Photogrammetry, Vol 60, No11, Canada, 1997, pp 1327-1332
10. Li Z., A Comparative Study of The Accuracy of Digital Terrain Models (DTMs) Based On Various Data Models, ISPRS Journal Of Photogrammetry And Remote Sensing. vol 49(1), 1994, pp 2-11
11. Pratihba P. Shingare and Mr. Sumit S. Kale, Review on Digital Elevation Model. International Journal of Modern Engineering Research (IJMER), vol. 3 Issue 4, 2013, pp 2412-2418
12. Riad J Nurmohamed and Peter Donk, Development of digital elevation models for hydrologic modeling purposes for large river basins in Suriname, Academic Journal of Suriname. Suriname, 2013, pp 339-346
13. Gert A. Schultz, "Use of remote sensing data in a GIS environment for water resources management" Sensing and Geographic Information Systems for Design and Operation of Water Resources Systems (Proceedings of Rabat Symposium S3), IAHS Publ, No. 242, Rabat, 1997, Pp 3-17
14. Roy Suvendu, Sahu Abhay Sankar, "Effectiveness of basin morphometry, remote sensing, and applied geosciences on groundwater recharge potential mapping: a comparative study within a small watershed" Frontiers of Earth Science, 2016, Volume 10(2), Pp 274-291.

Water Reservoir Area and Volume Determination Using Geoinformation Technologies and Remote Sensing

15. Kumar Avinash, B Deepika, K.S.Jayappa, "Basin Geomorphology and Drainage Morphometry Parameters Used as Indicators for Groundwater Prospect: Insight from Geographical Information System (GIS) Technique", Journal of Earth Science, Volume. 25, No. 6, China, 2014, Pp 1018-1032.
16. Global Mapper User Guide 2018 Copyright Blue Marble Geographics
17. Ye.S. Bogdanets, V.A. "Study of a tool for automatic construction of a hydrographic network in the Global Mapper program", Russia, Master'S Journal Volume No1, 2018, Pp. 19-23.

His research interest in: Patterns of spreading of a stream constrained by transverse dams on rivers with asymmetric floodplains.
He has published more than 2 publications in various journals and more than 7 theses in international conference proceedings.

AUTHORS PROFILE

Khasanov Khojiakbar. Researcher of Hydrotechnical structure and engineering construction department, Tashkent Institute of Irrigation and Agricultural Mechanization Engineers. Work address: Uzbekistan, Tashkent city, Mirzo-Ulugbek dist. 39 Kari Niyazov st. Bldg/office: study building B, room 303. Tel (work): +99871-237-19-32
Email: khojiakbarkhamza@gmail.com

His GIS skill: ArcGIS 10.3, Global mapper, ArcView, Surfer and other.

His CAD skill: AutoCAD, Land CAD, Topo CAD, 3D Civil

His research interest in: Improving methods for calculating the area and volume of reservoirs using geoinformation technologies and remote sensing.

He has published 3 publications in journals included in Higher Attestation Commission and 3 theses in international conference proceedings.

Bakiev Masharif, doctor of technical sciences, professor and head of Hydrotechnical structure and engineering construction department, Tashkent Institute of Irrigation and Agricultural Mechanization Engineers.

Work address: Uzbekistan, Tashkent city 100000, 39 Kari Niyazov st. Bldg/office: study building B, room

302. Tel.: +99871-237-19-32. Email: bakiev1947@rambler.ru

His research interest in: flow spreading patterns, deaf spur, through spur, calculation of the flow velocity field, channel flow and another.

Under the leadership of Bakiev, were published 16 textbooks, 7 recommendations, more than 100 scientific articles and there were taken 4 author's certificates, during the last 5 years.

Under the leadership of prof. M.R.Bakiev was prepared 11 candidates of science and 4 PhD., 1 doctor of science.



Choriev Jamshid. Hydrotechnical structure and engineering construction department, Tashkent Institute of Irrigation and Agricultural Mechanization Engineers. Work address: Uzbekistan, Tashkent city 100000, 39 Kari Niyazov st. Bldg/office: study building B, room 319B. Tel: +99871-237-19-32

Email: jamshidc77@gmail.com

His research interest in: The new structure of mobile weir with the trapezoidal opening for farmlands using GIS, RS and GPS technology

He has published more than 10 publications in various journals and more than 10 theses in international conference proceedings.

Khalimnetov Azat. Assistant of Hydrotechnical structure and engineering construction department, Tashkent Institute of Irrigation and Agricultural Mechanization Engineers. Work address: Uzbekistan, Tashkent city 100000, 39 Kari Niyazov st. Bldg/office: study building B, room 301B. Tel.: +99871-237-19-32

Email: khalimbetovazat@gmail.com

His research interest in: Improving the design and calculation methods of combined dams in foothill sections of rivers using GIS technology

He has published more than 3 publications in various journals and more than 5 theses in international conference proceedings.

Jahonov Aziz. Assistant of Hydrotechnical structure and engineering construction department, Tashkent Institute of Irrigation and Agricultural Mechanization Engineers.

Work address: Uzbekistan, Tashkent city 100000, 39 Kari Niyazov st.

Bldg/office: study building B, room 302A

Tel.: +99871-237-19-32

Email: azizjon_1990@umail.uz